

FREE - TAKE ONE!

Vol. 28 No. 47

FEBRUARY 17, 2022

800-543-8271 • 800-665-8875

WEEKLY TRADER MAGAZINE



Find us on Facebook

@myweeklytrader
AUCTIONS PG. 11

VISIT OUR NEW WEBSITE! MYWEEKLYTRADER.COM

Honda
OF THE
OZARKS



2022 HONDA ATV'S THEY PLAY AS HARD AS THEY WORK ARRIVING DAILY



FourTrax Rancher



FourTrax Rancher ES



FourTrax Rancher 4x4
Automatic DCT EPS



FourTrax Rancher 4x4
Automatic DCT IRS EPS

ALL NEW 2022 Honda RANCHERS

2022 FOREMAN & FOREMAN RUBICON MODELS



Foreman 4x4



Foreman 4x4 ES EPS



Foreman 4x4 EPS



Foreman
Rubicon DCT EPS

RESERVE YOURS TODAY!

OUR PRICE PROMISE: If you find a better verified price in Missouri,
WE WILL BEAT IT. **GUARANTEED!**

(417)862-4686
2055 E. Kerr St.

HondaOfTheOzarks.com
I-44 & GLENSTONE EXIT 80

MSRP excludes destination charge. Visit Powersports.honda.com to view applicable destination charge amount. UTILITY ATVs ARE RECOMMENDED FOR RIDERS 16 YEARS OF AGE AND OLDER. ALL ATV RIDERS SHOULD TAKE A TRAINING COURSE AND READ THEIR OWNER'S MANUAL THOROUGHLY. MULTI-PURPOSE UTILITY VEHICLES CAN BE HAZARDOUS TO OPERATE. PIONEER IS ONLY FOR DRIVERS 16 YEARS AND OLDER. DRIVER AND PASSENGER MUST BE TALL ENOUGH FOR SEAT BELT TO FIT PROPERLY AND TO BRACE THEMSELVES WITH BOTH FEET FIRMLY ON THE FLOOR. PASSENGER MUST BE ABLE TO GRASP THE HANDHOLD. NEVER DRIVE WITH MORE THAN ONE PASSENGER. ALWAYS WEAR YOUR SEAT BELT, AND KEEP THE SIDE NETS AND DOORS CLOSED. ALL MUV USERS SHOULD WATCH THE SAFETY VIDEO "MULTIPURPOSE UTILITY VEHICLES: A GUIDE TO SAFE OPERATION" AND READ THE OWNER'S MANUAL BEFORE OPERATING THE VEHICLE. FOR BOTH TYPES OF VEHICLES, ALWAYS WEAR A HELMET, EYE PROTECTION AND APPROPRIATE CLOTHING. AVOID EXCESSIVE SPEEDS, AND BE CAREFUL ON DIFFICULT TERRAIN. FOR YOUR SAFETY BE RESPONSIBLE. NEVER DRIVE UNDER THE INFLUENCE OF DRUGS OR ALCOHOL, OR ON PUBLIC ROADS. RESPECT THE ENVIRONMENT WHEN DRIVING. See dealer for details.



Get a great deal on getting more done.

Compact Tractors Cab available with select models 24.8-47.3 HP

 **Kubota** Together we do more.

Save big on L01 Series and LX Series compact tractors. The versatility to handle every job and a wide range of performance-matched attachments. Kubota tractors under 100 HP are rated #1 for reliability*. Stop in for a demo today.

\$0 DOWN 0% APR UP TO 60 MONTHS
 PLUS
SAVE UP TO \$1,100

VISIT US TODAY FOR THIS LIMITED-TIME OFFER

Quarles Supply

3251 S Springfield Ave
 Bolivar, MO 65613
 417-777-2391

KubotaUSA.com

2020 Progressive Farmer Reader Insights Award for Fewest Reported Problems Overall in the category of Small Tractor (Under 100 Horse Power). Award based on 2020 Progressive Farmer Readers Insights Tractors Study. © Kubota Tractor Corporation, 2022. \$0 Down, 0% APR financing for up to 60 months available on purchases of new Kubota L2501 equipment from participating dealers in-stock inventory is available to qualified purchasers through Kubota Credit Corporation, U.S.A.; subject to credit approval. Example: 60 monthly payments of \$16.67 per \$1,000 financed. Customer instant rebates of \$700 are available on qualifying finance or \$500 on cash purchases of L2501 equipment. Additional instant rebate of \$400 is available with purchase of one new qualifying implement. Some exceptions apply. Offers expire 2/28/22. Terms subject to change. This material is for descriptive purposes only. Kubota disclaims all representations and warranties, express or implied, or any liability from the use of this material. For complete warranty, disclaimer, safety, incentive offer and product information, consult your Dealer or KubotaUSA.com.



RB15 SERIES

REAR BLADES
17-40 HP 60", 74", 84" Widths

- Cat. 1 Hitch
- 7 Forward angles; 5 Reverse angles
- 12" Offset left or right
- 14" Moldboard height
- 1/4" Moldboard thickness
- Landscape Rake adaptable
- Optional storage stand

Getting Chores Done
LAND PRIDE
does that.



www.landpride.com

For Outstanding Products & Service

AGRI-ENTERPRISES

1-1/2 Miles South Of Licking, MO On Hwy 63

573-674-2203 • 1-800-653-7152 • www.agri-enterprises.com

HISTORY OF ST. ALBANS, MO. : H.B.
\$20. 417-532-2045. (leave message and phone number). Lebanon.

STOCK MOBILE HOMES AVAILABLE:
We gottem, single and double, 3 and 4 bedroom! Call Tuffy 573-657-2176. amegamobilehomes.com

WEATHERED BARN WOOD SIDING: 10" wide. 573-729-7226. www.pineridgerustic.com Salem.

AVAILABLE STOCK MOBILE HOMES: Immediately, double wide and single, 3 and 4 bedroom 573-499-9993 columbiadiscountohomes.com

LOG SIDING: 2X8 Pine/Western Cedar www.pineridgerustic.com 573-729-7226. Salem.

USED MOBILE HOMES: Call David at VILLA HOMES IN ROLLA 573-578-8072. Rolla.

BUYING MOBILE HOMES: Call David at VILLA HOMES IN ROLLA 573-578-8072. Rolla.

WANTED TO BUY ANTIQUE CARS: Convertible, Corvettes, unrestored, motors, parts considered. 870-324-1154. Ash Flat.

STORY & PICTURES BOOK OF OLD LINN CREEK: Haha Tonka and Camden County, by T. Victor Jeffries, 72 pages. \$5.00 postpaid. (417)532-2045. (Leave message and phone number). Lebanon.

WANTED TO BUY DODGE DIESEL TRUCK: Or Toyota Tacoma. Also, buying antique cars. 870-324-1154. Ash Flat.





I BUY.....used mobile homes. Call or text 573-338-6250 or email GregS.CH@outlook.com

TRUE MODULARS: 30 to 60 day delivery available, 3 and 4 bedroom 573-657-7040 chateauhomes.net

VOTED #1 BEST Preowned Car Dealership

TIM'S USED CARS

(573) 341-3828 • 1334 South Bishop (Hwy. 63) • Rolla, MO
Next to Hwy CC • www.tims-used-cars.com

 <p>2016 FORD F150 XLT Crew Cab, 4x4, 2.7 Eco Boost, Power Equipped, 128,xxx Miles Only \$29,900</p>	 <p>2014 RAM 1500 LARAMIE Crew Cab, 4x4, 5.7 V-8, Loaded w/ Options, 134,xxx Miles Only \$31,900</p>
 <p>2016 CHEVY 1500 WT Double Cab, 4x4, 5.3 V-8, Power Equipped, 177,xxx Miles Only \$24,900</p>	 <p>2014 FORD F150 XLT Crew Cab, 4x4, 5.0 V-8, Power Equipped, 89,xxx Miles Only \$25,900</p>

LARGE SELECTION OF CARS, TRUCKS, SUVs & VANS!

THE FIELD GUIDE TO WILD FLOWERS, 223 pages, based on Field Book of American Wild Flowers by F. Schuyler Mathews, \$6.50. 417-532-2045. (Leave message and phone number). Lebanon.

TINY HOMES: We gottem 573-881-3283

REGISTERED HEREFORD & ANGUS BULLS: Home raised, Some Show-Me Select Qualified. 573-701-7828. Belgrade.

WANTED: Old Pinball Machines and Juke Boxes. 573-424-7200.

RUBBER & LEATHER BOOTS AND HIP WADERS. Men's 11, Women's 7, some insulated. \$15-\$40 obo. 636-239-2695. Washington.

POOL TABLES: Installations, moves, recovers, repairs, accessories, etc. 573-646-1700.

CUSTOM SAW MILLING: 417-533-4607. 417-664-1195. Lebanon.

WINCHESTER MODEL 94: 30-30, lever action. \$1,200. 417-533-9484. Niangua.

LOOKING BACK WITH AN OLD TIMER BOOK: by Roy G. Mansfield as told to Eula York, of the Osage River Valley and the people who lived there before Bagnell Dam was built. Out of print book, \$20. Many old photos. 417-532-2045. (Leave message and phone number). Lebanon.

LIONEL TRAIN SET: Steam engine, tender, caboose and other car, track and transformer. \$195. 573-364-7465. Rolla.

M FARMALL: With SM motor, 417-349-2908. Cabool.



Meadowview Dutch Market

Discount & Surplus Groceries • Prices Subject to Stock on Hand

Call to Order
417-993-3017

Sale Dates February 16th 2022 to February 22nd, 2022 while supplies last!

DELI SPECIAL

SLAB BACON	REG. \$5.99 LB.	SALE \$5.49 LB.
VIRGINIA HAM.....	REG. \$4.89 LB.	SALE \$4.39 LB.
FARMERS CHEESE	REG. \$5.50 LB.	SALE \$5.00 LB.

TRY our Fresh Homemade DELI Sandwiches: TURKEY, HAM, ROAST BEEF, ITALIAN, BLT'S, PULLED PORK AND BLT PULLED PORK (MADE YOUR WAY)! COME IN OR CALL to order! ALSO Custom Deli trays! Veggie OR FRESH Meat-N-Cheese!

3 Cheese Blend Shreds

\$1.99
LB.



K-Cup Coffee

BUY ONE GET ONE FREE



Grape Nuts Cereal

TWO \$4
FOR 20.5 OZ.

Yellow Onion

\$2.99
10 LBS.



Cornish Hens

50¢
LB. 30 LB. CASE



8 Piece Chicken

99¢
LB.



Strawberry Jello Cups

50¢
13.5 OZ.



MEADOWVIEW DUTCH MARKET
417-993-3017 Hours: Mon-Thurs 8-5pm
Fri 8-6pm • Sat 8-5pm
23 Miles West on Hwy 64 • Right on T Hwy
9 miles • Left on E Hwy 1 mile on Left

NOW ACCEPTING CREDIT, DEBIT CARDS & EBT

DUTCH COUNTRY STORE, LLC
573-378-4395
Hours: Mon-Thurs 8-5pm
Fri 8-6pm • Sat 8-5pm
5 miles East of Versailles off Hwy C on Kelsay Road

HORMEL SPIRAL SLICED HAM

\$1.39
LB.



BONELESS SKINLESS CHICKEN BREAST

\$1.99
LB.



FIREARMS: Professional Repair, Restorations and Appraisals. Baron's Gunsmithing. 573-363-5801, Camdenton.

OUTDOOR FORCED AIR WOOD FURNACE: Fire proof, insulated, thermostatically controlled. Been made since 1986. Made by Harmons Heating & Cooling. 573-743-6943 or 573-247-5585. Salem.

NEW SCHWINN STINGRAY BICYCLE: Monkey Handlebars. Banana seat. Rear Racing Slick. \$145.00. 573-364-7465. Rolla.

QUALITY USED SADDLES WANTED: Will pay cash! George's Tack, Saddles & Feed. 573-346-7866. Camdenton.

EARN \$60,000/YEAR PART-TIME: In the livestock or farm equipment appraisal business. Agricultural background required. Home study course available. 800-488-7570 or www.amagappraisers.com

TRUCKERS & LOGGERS: Keep your Diesel engines running smooth this winter by adding Diesel plus. Extends the life of injectors and fuel pumps. For more info. Call 417-241-3653.

FAINTING GOAT BABIES ON BOARD: 1ST kids just arrived. All colors & patterns. 100% pure bred. Check website www.greenacresvillage.com or text 573-216-7796 for more info. Lake of the Ozarks.

GILSON LAWNMOWER: Triple paint in original color, needs motor and assembly. \$195. 573-364-7465. Rolla.

KESSLING & SMITH FAMILY HISTORY BOOK OF WEBSTER COUNTY, MO: Also, Rader and Mace families. \$6.50. 417-532-2045. (Please leave message and phone number). Lebanon.

HEARTH CRAFT GLASS BI-FOLD FIRE PLACE DOORS: Antique brass. \$200 obo. 636-239-2695. Washington.

KITCHEN FAUCET MOEN: Single lever, sprayer, new cartridge. \$45 obo. 636-239-2695. Washington.

CERAMIC CANISTER SET: With cutting board that fits in kitchen counter top. Various species of ducks. Set \$40 obo. 636-239-2695. Washington.

THE HEART OF THE SPRING BOOK. A Bennett Spring Novel by Laura L. Valenti, 161 pages. \$6.50. 417-532-2045. (Leave message and phone number). Lebanon.

MINI FARM 18.8 M/L SURVEYED ACRES: 3-bedroom ranch, shop. St. Francis County. Best Offer. Details Call 417-255-6640.

SMALL SQUARE BALES: Good quality, \$5.50 per bale. 417-345-5634. Phillipsburg.

WOODED ACREAGE: Paved road, Collins MO, 5 acres m/l. \$25,000. Collins.

350 FARMALL: Runs good, TA works. 417-349-2908. Cabool.

FIREPLACE LOG GRATE: 28" in width. \$25 obo. 636-239-2695. Washington.

CORELLE DISHES: different patterns, 48 piece set for \$40. 417-532-2344. Lebanon.

OLD HANDMADE FULL-SIZE QUILTS: \$50 each. 417-532-6561. Phillipsburg.

VINTAGE TWIN THRILLER NANCY DREW BOOKS: 17 editions \$50 for all. 417-532-6561. Phillipsburg.

AUSTRALIAN SHEPHERD PUPPIES: 12 Weeks Old, UTDI shots, Will trade for farm animals or rehoming fee. 417-967-6493. Roby.

FIDDLE, BOW & CASE: Copy of a Stradivarius, \$200. 573-764-4435. Gerald.

CLASSIC AMERICAN MUSCLE

We also have Bad Boy Implements





2021 BB3026HL
2021 BB4035CHIL

WORK WITH AN *Attitude*

1387 S. BISHOP AVE., ROLLA • 573-364-6944
WWW.STAHLMANPOWERSPORTS.COM

I BUY GRAIN BINS: All sizes and conditions. Price depends on size and condition. Please call 573-280-5638. Sunrise Beach.

ROUND GLASS DINING TABLE: 54" wide, 4 chairs, \$50. 417-532-2344. Lebanon.

A KID GROWING UP ON ROUTE 66 BOOK: By Bill Wheeler, Waynesville/Pulaski County area, many photos. \$6.50. 417-532-2045. (Leave message and phone number). Lebanon.

KENMORE 27" BUILT-IN SINGLE OVEN: Self-cleaning, black, \$100 or best offer. 636-239-2695. Washington.

5 BLUE CORNFLOWER CORNINGWARE BAKING BOWLS: With lids, no chips. \$60. 417-532-2344. Lebanon.

BIRDS OF MISSOURI FIELD GUIDE: By Stan Tekiela, 182 pages, \$5. 417-532-2045. (Leave message and phone number). Lebanon.

AUSTRALIAN SHEPHERD PUPPIES: 573-202-3132.

BRAND NEW AREA RUGS: Good on ceramic and wood flooring. White fluffy with gray squares. \$125. Call between 8 am-8pm. 417-664-4278. Lebanon.

MEDINA FIDDLE, BOW & CASE: \$75. 573-764-4435. Gerald.

BIG HORN 16" SADDLE: Dark leather, excellent sharp, \$200 Firm. 573-205-9401. Belle.

PIG FEED 450LB: \$200 firm. 573-205-9401. Belle.

WANTED: Transmission, automatic, 1957 Chevy car, cash paid. 573-636-8000. Jefferson City.

RUGER PC9MM CARBINE: With scope, extra mag, loader, bought new. \$650. 417-844-43149. Springfield.

BOOST YOUR ONLINE PRESENCE TODAY!

WE MAKE DIGITAL ADVERTISING SIMPLE

Don't you just hate it when someone talks over your head? We hate it too! That's why our mission at LC Digital is to simplify digital advertising for businesses.

We will start with a little research to help you identify the best types of digital ads for your business, then we will design a strategy that will fit your budget. We promise we will make it simple for you to understand.



ORGANIC CHICKEN LITTER/HIGH CALCIUM LIME: Delivered trailer loads, \$120T. Spreader truck available. 800-807-9612.

4 USED TIRES FOR SALE: 31X10.50X15, 6-ply, excellent trailer or implement tires. \$60. 573-743-6257. Steelville.

28X52 AMISH BUILT 1996 DUTCH HOME: One owner, 3 bedroom, 2 bath, utility room, vinyl siding, new architectural shingles, new carpet & pad, 2x6 walls, central air, big stone fireplace. This home is in perfect condition. Everything guaranteed. Includes new vinyl skirting. Free Delivery and set up. \$49,995. Call Charlie at 573-786-4003. Hwy 8 & Hwy Y. Steelville.

DARDEN PROFESSIONAL TIMBER HARVESTING, BUYING STANDING TIMBER: Great prices, improve wildlife habitat and improve forest health. State Certified & Fully Insured! 573-247-4808 or 573-739-1122. Salem.

IHC 10FT. WHEEL DISK: \$1,800. 573-765-4406. Richland.

MOBILE HOME TIRE AND WHEELS: \$50 each. Call Charlie at 573-786-4003. Steelville.

PICKUP TRUCK BEDLINER: Standard size, fits Ford F150-F350. \$40. 314-303-7857. Cedar Hill.

JOHN DEERE 275 DISK MOWER: \$6,250. 573-765-4406. Richland.

HELP WANTED PLUMBER

Seeking a plumber with experience in residential service plumbing. Must have experience with all sorts of plumbing repairs and the ability to troubleshoot and repair plumbing problems. We are looking for someone who is outgoing, self-motivated, reliable and has quality ethics. A valid drivers license with good driving record is a must. We offer long term employment to the right candidate with paid vacation, paid holidays and health insurance. Immediate employment.

PLEASE CALL 573-348-2093

Four Seasons Plumbing



MECHANIC WANTED

Consolidated Electric Service is looking for an experienced mechanic. Work will include small engine repair to heavy duty diesels and Altec equipment. Welding, and fabricating experience, Missouri inspection license, Class A CDL and owning your own tools is a plus. Must have a clean driving record and be able to work in a drug free workplace. We offer competitive wages, paid health and dental, retirement, paid vacations and holidays. If interested, please call 417-588-9562 or send resumes to jburgessces@aol.com

CYCLOPS & PARMAK CHARGERS

- Deli Sandwiches
- Glass Bottle Milk
- Homemade Yogurt
- Cheese & Spices
- Homemade Bread
- Bulk Foods
- Hydraulic Hoses
- Johnson & Ritchie Waterers
- Electric Fence Supplies
- Gates & Panels
- Stay-Tuff Fence

VISIT YOUR ONE STOP SHOP FARMERS QUIK STOP

5 mi. East of Lebanon on Hwy 32 • 417-991-1938



NEW POWERFUL MINI CROSSBOW: \$100. 573-327-9068. Desloge.

2 NEW DVD PLAYERS: \$90 for both. 573-327-9068. Desloge.

TOTE FULL OF AUNT JEMIMA STUFF: \$200 for all. 573-327-9068. Desloge.

WTB GOOD SADDLE HORSE: 573-953-7589. Dixon.

2006 CHEVY 1/2 TON: 198,000 miles, 2 wd, mechanically good condition, few dents & scratches. \$4,500. 417-967-2251. Houston.

HORSEMAN MAGAZINES: Some as old as the 1940's. Information and Articles of all kinds about horses and horse related things. \$2.00 each 573-364-1779. Rolla.

VICON 10FT. DISK MOWER: \$2,650. 573-765-4406. Richland.

REGISTERED POLLED HEREFORD BULLS FOR SALE: Ready to go to work. 417-259-0588. Hartville.

CABLE PULLING JAW GRIP: Klein 1684-5, excellent condition. \$150. 314-303-7857. Cedar Hill.

GM 1/2 TON 4-WHEEL DRIVE FRONT AXEL HOUSING: With 3.07 gears. Fits a 77 to 87. \$80. 314-303-7857. Cedar Hill.

Buildings • Hunter's Cabins • Lawn Furniture



JAMCO Portable Buildings

800-688-2064 • 307 Enterprise Dr. • Seymour, MO • www.jamcobuilders.com

Rent To Own Plan

KUSTER LOGGING

BUYER of Standing Timber Oak and Walnut

Dozing Now Available

417-259-0047

References Available



WTB SMALL HORSE WALKER: Good or bad shape. 573-953-7589. Dixon.

IHC 1086 DIESEL TRACTOR: Cab & air, 130 hp. runs nice, \$13,000. 573-765-4406. Richland.

1954 CHEVROLET PICKUP GAS TANK: And other misc. front end parts. 573-732-3557. Bourbon.

MILLER 10 FT OFFSET DISK: \$3,950. 573-765-4406. Richland.

L3901 KUBOTA 4WD TRACTOR WITH LOADER: 38hp, hydrostat transmission. \$22,900. 417-270-1505. West Plains.

FORD 5600 DIESEL TRACTOR: 60hp. Good. \$7,850. 573-765-4406. Richland.



*Say "Goodbye to high material/building prices!!"
We manufacture it all in house.*

Metal Roofing
Building In A Box
-Shop Kits-



Portable Sheds
10x12s from \$2,250
12x16s from \$2,995

**Rent To Own
available**

Overmanmetal.com ★ Buildinginabox.org

40 year warranty metal **SPECIAL:**
****Charcoal- \$2.85 per linear ft./3ft wide/29 Gauge****

Bring in a competitor's quote and if we can't beat it by 10% on the first try, we will buy you lunch at our deli inside the store!

★ **1606 Chicory Rd. Rogersville MO.** ★
417-753-8030

1100 Pace Rd. Pocahontas, AR - 202 S. Prigmor Joplin, MO

2002 F150: 4wd, automatic, power, extended cab, 180,000 miles. \$6,800. 314-972-2903. Mineral Point.

JOHN DEERE 566 ROUND BALER: Monitor, kicker. \$5,200. 573-765-4406. Richland.

JOHN DEERE 435 ROUND BALER: 4X6, monitor, net wrap. \$7,450. 573-765-4406. Richland.

JOHN DEERE 310C DIESEL BACKHOE LOADER: \$11,500. 573-765-4406. Richland.

TANDEM AXEL 750 GALLON PASTURE SPRAYER: Hyd pump, single jet. \$2,300. 573-765-4406. Richland.

JOHN DEERE 567 ROUND BALER: Monitor, kicker, net wrap. \$9,650. 573-765-4406. Richland.

TRADE IN

TRADE UP *Sale*

UPGRADE & GET TOP DOLLAR FOR YOUR TRADE

 <p>LOT FOR A LITTLE PACKAGE</p> <p>1023E Compact Tractor + Loader & Mower</p> <p>NOW ONLY \$260/Month</p>	 <p>OZARK PACKAGE PACKAGE</p> <p>3032E Compact Tractor + Loader & Rotary Cutter</p> <p>NOW ONLY \$369/Month</p>	 <p>DIY DIGGER PACKAGE</p> <p>1025R Tractor + Loader & Backhoe</p> <p>NOW ONLY \$353/Month</p>
 <p>CURB APPEAL PACKAGE</p> <p>3025E Compact Tractor + Loader</p> <p>NOW ONLY \$312/Month</p>	 <p>WEEKEND WARRIOR PACKAGE</p> <p>3038E Compact Tractor + Loader, Rotary Cutter & Trailer</p> <p>NOW ONLY \$455/Month</p>	 <p>ORDER & SAVE PROGRAM</p> <p>\$500 OFF ANY GATOR RETAIL ORDER</p> <p>LIMITED TIME OFFER</p>

SAVE 15% OR MORE DURING OUR *Winter Maintenance Sale*



Heritage

TRACTOR

Some restrictions apply, see dealer for details. Offer ends 2/28/2022.

Scan for a Quote



HISTORY OF ST. ALBANS, MO. : H.B. \$20. 417-532-2045. (leave message and phone number). Lebanon.

WEATHERED BARN WOOD SIDING: 10" wide. 573-729-7226. www.pineridgerustic.com Salem.

LOG SIDING: 2X8 Pine/Western Cedar www.pineridgerustic.com 573-729-7226. Salem.

USED MOBILE HOMES: Call David at VILLA HOMES IN ROLLA 573-578-8072. Rolla.

BUYING MOBILE HOMES: Call David at VILLA HOMES IN ROLLA 573-578-8072. Rolla.

WANTED TO BUY ANTIQUE CARS: Convertible, Corvettes, unrestored, motors, parts considered. 870-324-1154. Ash Flat.

STORY & PICTURES BOOK OF OLD LINN CREEK: Haha Tonka and Camden County, by T. Victor Jeffries, 72 pages. \$5.00 postpaid. (417)532-2045. (Leave message and phone number). Lebanon.

WANTED TO BUY DODGE DIESEL TRUCK: Or Toyota Tacoma. Also, buying antique cars. 870-324-1154. Ash Flat.

WANTED: Old Pinball Machines and Juke Boxes. 573-424-7200.

STOCK MOBILE HOMES AVAILABLE: We gottem, single and double, 3 and 4 bedroom! Call Tuffy 573-657-2176. amegamobilehomes.com

AVAILABLE STOCK MOBILE HOMES: Immediately, double wide and single, 3 and 4 bedroom 573-499-9993 columbiadiscounthomes.com

TRUE MODULARS: 30 to 60 day delivery available, 3 and 4 bedroom 573-657-7040 chateauhomes.net

BRUSHOG 12815: 15ft. Hyd. Fold Brush cutter, very nice. \$17,000. 573-765-4406. Richland.

IHC 986 DIESEL TRACTOR: Canopy with Westerdorf T.A. 28 loader. \$13,000. 573-765-4406. Richland.

PULL TYPE 10 FT BOX BLADE WITH CYLINDER: Near new, \$1,800. 573-765-4406. Richland.

FORD 4610 DIESEL TRACTOR: Canopy with Brush hog loader. \$12,500. 573-765-4406. Richland.

THE FIELD GUIDE TO WILD FLOWERS, 223 pages, based on Field Book of American Wild Flowers by F. Schuyler Mathews, \$6.50. 417-532-2045. (Leave message and phone number). Lebanon.

CUSTOM SAW MILLING: 417-533-4607. 417-664-1195. Lebanon.

WINCHESTER MODEL 94: 30-30, lever action. \$1,200. 417-533-9484. Niangua.

FAINTING GOAT BABIES ON BOARD: 1st kids just arrived. All colors & patterns. 100% pure bred. Check website www.greenacresvillage.com or text 573-216-7796 for more info. Lake of the Ozarks.



Cheyenne Acres
Horse & Tack
BUY - SELL - TRADE
by Rolla, MO
Call For Directions & Availability
Call Kip
573-368-9402

EARN \$60,000/YEAR PART-TIME: In the livestock or farm equipment appraisal business. Agricultural background required. Home study course available. 800-488-7570 or www.amagappraisers.com

FIREPLACE LOG GRATE: 28" in width. \$25 obo. 636-239-2695. Washington.



COMMERCIAL ROOFING
D&N COATINGS LLC
5795 Highway 5
Hartsville, MO 65667
Roof Restoration Specialists
Why replace? Extend the life of your existing roof.
(417) 241-3653
www.dncoatings.com

KESSLING & SMITH FAMILY HISTORY BOOK OF WEBSTER COUNTY, MO: Also, Rader and Mace families. \$6.50. 417-532-2045. (Please leave message and phone number). Lebanon.

SMALL SQUARE BALES: Good quality, \$5.50 per bale. 417-345-5634. Phillipsburg.

BIRDS OF MISSOURI FIELD GUIDE: By Stan Tekiela, 182 pages, \$5. 417-532-2045. (Leave message and phone number). Lebanon.

OUTDOOR FORCED AIR WOOD FURNACE: Fire proof, insulated, thermostatically controlled. Been made since 1986. Made by Harmons Heating & Cooling. 573-743-6943 or 573-247-5585. Salem.

TRUCKERS & LOGGERS: Keep your Diesel engines running smooth this winter by adding Diesel plus. Extends the life of injectors and fuel pumps. For more info. Call 417-241-3653.

CERAMIC CANISTER SET: With cutting board that fits in kitchen counter top. Various species of ducks. Set \$40 obo. 636-239-2695. Washington.



YOU HAVE OPTIONS FOR HEALTHCARE!
WE CAN HELP YOU NAVIGATE HEALTHCARE.GOV
Choices In Health & Life Insurance
Mike Eblen, Agent
417-532-3360
238 S. Jefferson Avenue Suite A, Lebanon

RUBBER & LEATHER BOOTS AND HIP WADERS. Men's 11, Women's 7, some insulated. \$15-\$40 obo. 636-239-2695. Washington.

TINY HOMES: We gottem 573-881-3283

HEARTH CRAFT GLASS BI-FOLD FIRE PLACE DOORS: Antique brass. \$200 obo. 636-239-2695. Washington.



Don't struggle with your problem property - GET A FAIR PRICE FOR IT AND CASH FAST!
CALL TODAY! 417-991-6445
MID MO LAND CO LLC



RED BARN FIREARMS, LLC
• GUNS • AMMO
• RELOADING SUPPLIES
• DEPT. OF CONSERVATION HUNTING & FISHING LICENSES
417-818-6317 • 1101 N. HWY 13 COLLINS, MO 64738



TAYLOR TRUCKS & EQUIPMENT
417-924-2026 • 2676 Hwy. 5, Mansfield, MO
Bush-Whacker Heavy Duty Rotary Cutter

I BUY.....used mobile homes. Call or text 573-338-6250 or email GregS.CH@outlook.com

NEW SCHWINN STINGRAY BICYCLE: Monkey Handlebars. Banana seat. Rear Racing Slick. \$145.00. 573-364-7465. Rolla.

REGISTERED HEREFORD & ANGUS BULLS: Home raised, Some Show-Me Select Qualified. 573-701-7828. Belgrade.

LOOKING BACK WITH AN OLD TIMER BOOK: by Roy G. Mansfield as told to Eula York, of the Osage River Valley and the people who lived there before Bagnell Dam was built. Out of print book, \$20. Many old photos. 417-532-2045. (Leave message and phone number). Lebanon.

FIREARMS: Professional Repair, Restorations and Appraisals. Baron's Gunsmithing. 573-363-5801, Camdenton.

LIONEL TRAIN SET: Steam engine, tender, caboose and other car, track and transformer. \$195. 573-364-7465. Rolla.

QUALITY USED SADDLES WANTED: Will pay cash! George's Tack, Saddles & Feed. 573-346-7866. Camdenton.

GILSON LAWNMOWER: Triple paint in original color, needs motor and assembly. \$195. 573-364-7465. Rolla.

POOL TABLES: Installations, moves, recovers, repairs, accessories, etc. 573-646-1700.



TRAILER PARTS & REPAIR | BUSH-WHACKER HD, SKIDSTEER BRUSH CUTTER
DANUSER DEALER
Intimidator Tree Puller
T3 Post Driver & Other Attachments
New Mowers! Bush-Whacker, Big Bee Storage Containers & Dry Vans - 20' - 53'
Farm Tires, New Semi Tires, PTO's & Parts for Rotary Mowers, Farm Tractor Implements, Plows, Used 15" Bush-Whacker Now In Stock, Discs, and More Skidsteer Attachments: Pallet Forks, Buckets, Grapples, Hay Spears, RR Ties
We Invite you To Come By & Look Us Over! Located 2.5 Miles North Of Mansfield, MO On Hwy 5

R&R AUCTION SERVICE

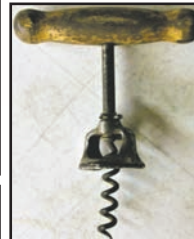
MEADORS ESTATE AUCTION SATURDAY FEBRUARY 19TH @ 6PM

R&R Auction House • 1644 South Ash in Buffalo, MO

Vintage furniture including but not limited to: (dressers, chairs, table, floor lamps, pole lamp, patio chair and loveseat, 2 drawer metal file cabinet, beauty salon dryer chair, old wooden rocker, flat screen TV and entertainment center,) old lamps, lawn ornaments, 12-gauge shotgun shells, braided rugs, lots of bedding, Corning Ware, Fire-King, cast iron, several anniversary plates, old Coke bottles, decorator plates, brass bells and brass figurines, old Japan porcelain, all kinds of figurines and what nots, Norcrest, step chair, office chairs, wall decor, wooden roll around cabinet with pull out cutting board, ladders, double wash tub, quilts, generator, feed sacks, lots of table service, lots of kitchen utensils, lots and lots of old dishes, Christmas decor, Neptune Brass Lantern, old fire extinguisher, several coolers, paper barrels, lawn trimmer, leaf blower, doilies, 6in bench grinder, rock bar, Glo Warm ventless heater, carnival glass, depression glass, old pictures, old colored Pyrex nesting bowls, jelly jars, Tupperware, lots of old toys and dolls, including 1966 Barbies, crutches, office supplies, photo paper, refrigerator dishes, pots and pans, small kitchen appliances, and much more to numerous to mention.



Auctioneers note: If you have been an auction goer in times past around Polk and Dallas counties, you're sure to remember Meadors Auctions. Kenneth and Zona Meadors spent a lifetime selling estates and now we have the privilege to sell the Meadors estate on this 1 night auction in our auction house. You will find lots of old, vintage, and collectible items sure to be a great addition to your collections as well as a multitude of general merchandise items.



Please keep watch on the website as we set up and add plenty of pics for you to view.

TERMS: 10% buyers premium. Cash, check, or credit card with proper I.D. nothing removed until settled for A 3% fee will be added to credit card purchases. Not responsible for errors in listing. Any announcement made sale day will take precedence over any printed matter. **Note:** Service will take every precaution to prevent accidents, but will not be responsible should any occur.

GENERAL AUCTIONEERS

Auction & Appraisals

For more information contact Professional Auctioneer Russ Weeks at 417-576-7357 or check out www.rrauctionservice.com

Serving this area's auction needs since 1997 with honesty and professionalism.
www.rrauctionservice.com
(417) 576-7357 or (417) 345-4140



PRESIDENT'S DAY AUCTION

Monday, February 21, 2022 • 10:00 a.m.

MOFFAT AUCTION CENTER • 467 CO RD 604, LINN, MO

DIRECTIONS: From Linn, take Hwy. 50 west 1 ½ mi. to Co. Rd. 604, turn left & go 1 mile to building on right, or from Jefferson City, take Hwy. 50 east approx. 18 mi. & turn right on Co. Rd. 604.



GUNS: Remington Nylon 66 .22 Auto; 22 Bolt Single; 12 ga. Single



ANTIQUES, COLLECTIBLES & HOUSEHOLD: Walnut Kitchen Cabinet; Oak Lamp Table; 5 Leg Oak Table; Pie Safe; White Painted Tables; Trunk; Wood Benches; Oak Kitchen Clock; Oil Lamps; Religious Items; Cast Iron Skillets (Some Wagner); Pyrex Nest Of Bowls; Crock Bowls; Sewing Rocker; 1960s Metal Toy Trucks; Costume Jewelry; Tobacco Tins; Stoneware Churn; Washboard; Kraut Cutter; Enamel Ware; Western Crocks (6gal-4gal-2 gal.); Crock Jugs; Wash Tubs; Lanterns; Old Bottles; Cast Iron Kettle; Beam Scale; Pictures; Linens; Old Dishes; Floral Sofa; Sectional Sofa; Recliners; Sofa & Chair; Cedar Chest; Pots, Pans & Dishes; Washer & Dryer Combo (1 Unit); Dining Table & 6 Chairs; Maple Bedroom Set; Maple Desk; Ringer Washer; Dresser & Chest; Coors Beer Light; HDTV; Recliner; Lamps; Baker's Rack; Jars for Canning; Sewing Supplies; Sewing Machine; Wood Swing;; Wood Totes; Stihl Weed Eater; Hand Tools; Tiller; Power Tools; Garden Tools.

Note: Hildaguard is 104 years old and she is no longer in her home. Most everything is neat & clean. **OWNER: Hildaguard Haslag**

Also Selling Items from Jody Rector who is selling her home in Whitney Wood and moving, as follows:

8 p. Amish Made Dining Room set w/ Natural Wood finished Ends & Soft Closed Door - Like New - Costs over \$9,000 new; Frigidaire Upright Freezer - Like New; Madea Refrigerator; Two 3 pc. Bedroom Sets; Sofa & Loveseat - Light Color; Lot of Household; Holiday Decor; Small Appliances; Remington 550 .22 Semi; Costume Jewelry - Some Sterling.



Lots of Other Antiques & Collectibles Yet to Be Unpacked in This Auction.
This is a large auction and we will run 2 rings most of the day.

FOR PICTURES, SEE WWW.MOFFATAUCTION.COM

Terms: Cash or good check with proper identification. All sales are final. Everything sells as is, where is. Proper identification is necessary to obtain a buyer's number. Announcements day of sale supersede all printed material. Food on grounds. .

RICHARD MOFFAT AUCTION SERVICE



573-761-4293
Jefferson City, MO

Auctioneers:
Richard Moffat & BJ Moffat
www.moffatauction.com

573-690-2823
Linn, MO

Sam **CRAWFORD AUCTION SERVICE** LLC

As we have sold our lake property, will sell the following located 1 mile North of Pittsburg, MO on Hwy. 64 to Co. Rd. 296L. Watch for auction signs.

SATURDAY, FEBRUARY 19TH, 2022 - 10 AM

TRACTOR - BOAT - RV - TRAILER - MISCELLANEOUS



RV • BOAT

2013 31' Coachman, Bumper Hitch, Catalina Deluxe Edition, 2 Slides, Kept Under Roof, Nice
2006 Alumacraft 2XB Boat & Trailer, Suzuki 40 HP Four Stroke, Fully Equipped, Appox. 100 Hrs. or Less Use, Kept in Side, Nice

TRACTOR

John Deere 750 Diesel Compact Tractor, Roll Bar, Turf Tires, 2200 Hrs., Shedded
Land Pride 4' 3 Pt. Brush Cutter, Ex. Good

TRAILER

Big Tex 18' Bumper Hitch Utility Flatbed Trailer w/ Ramps, Shedded, Ex. Good

LAWN MOWER • TOOLS

Bad Boy ZTR 60", Kohler 27 HP
2 Push Mowers
Push Trimmer
Floor Jack
4-5 Jack Stands
2 Handman Jacks
Delta 16" Scroll Saw
Small Wood Lathe
Bench Grinder
75# Anvil

2 Handyman Jacks
Long Handle Tools
Some Wrenches, Sockets
Some Power Tools
Werner Aluminum Step Ladder
Other Aluminum Step Ladders
Air Compressor Tank
Air Tank
Kerosene Heater
Roll Elec. Wire
2 Rolls Barb Wire
Sq. Galvanized Tub
Garden Hose
Life Jackets
2 Kayaks, 10 & 12'
3 Walking Golf Carts
Golf Clubs
Golf Misc.



HOUSEHOLD • MISCELLANEOUS

Mesh Patio Table, 4 Chairs
Gas BBQ & Smoker
2 Metal Lawn Chairs
Other Lawn Chairs
2-3 Cane Bottom Chairs
3 Wood Rockers
2 Storage Trunks
Asst. Household Miscellaneous

Good Clean Auction, Everything Well Cared For

SAM
CRAWFORD LLC
Auction Service



TERMS: Cash or good check. Nothing removed until settled for. Not responsible for accidents. Lunch available. Statements made day of sale take precedence over printed matter. All items sold as is. No warranties given or implied.

417-998-6629
Cross Timbers, Mo.

CrawfordAuctionService.com



Sam
417-328-9137

Chase
417-399-1904

Chance, CAI
417-298-1751

Tom Poynter
Jack Lancaster

GARY & SUSIE WALDEN

Sam **CRAWFORD AUCTION SERVICE** LLC

As we are selling our home, will sell the following located 2 miles North of Pittsburg, MO on Hwy. 64 to Hwy. 64B, then West 1 2/10th to Co. Rd. 277, then South 2/10th mile to Gray Bridge East Rd., then West. Watch for auction signs.

WEDNESDAY, FEBRUARY 23rd, 2022 - 10 AM

GOLF CART - GUNS - TOOLS - COLLECTIBLES - MISCELLANEOUS

GUNS - SELL AT 10 A.M.

- 2 Ruger .22 Semi Auto Pistols
- Mossberg 500 12 Ga. Pump
- Marlin 22 Semi Auto
- JC Higgins 22 Semi Auto
- Sev. Shooters Bibles, Gun Books

GOLF CART

TRAILER

SELLS 12 NOON

- Club Car Gas Golf Cart, Box Bed, Runs Good
- 6x10' 2 Wheel Trailer

TOOLS & OTHER

- DeWalt Miter Saw
- Older Craftsman Table Saw
- Lincoln 225 Elec. Welder
- Small Air Compressor
- Craftsman 10" Bench Top Drill Press
- Bench Grinder
- Good Asst. Power Tools & Cordless Tools
- Power Washer 5 HP Honda Motor
- 65# Anvil 6" Vise
- Floor Jack
- Sev. Bar Clamps & C Clamps
- Long Handle Tools

- Stihl 190C Chainsaw
- Echo 452 Chaisnaw
- Stihl Gas Blower
- 4-5 Gas Trimmers
- Poulan Pro 20 HP 48" Lawn Tractor
- John Deere 80 Lawn Cart
- Lg. Shop Vac
- Lot Hammers, Hatchets, Pliers, Vise
- Grips, Screwdrivers
- Asst. Wrenches, Sockets
- Sev. Handsaws, Levels, Squares
- Oil, Paint, Antifreeze
- 2 Storage Lockers
- File Cabinet
- Lot Nails, Bolts, Washers
- 6 & 8' Fiberglass Step Ladders
- Alum. Extension Ladders
- Pair Aluminum Lawnmower Ramps
- 8-10 Steel Posts
- 2 Steel Barrels
- Homemade 4' Lawn Roller
- Wheelbarrow, Saw Horses
- 2 Trolling Motors
- Ant. Elgin Outboard Motor
- 4-5 Sheets Plywood & Particle Board

- Other Lumber
- 15-20 Rods & Reels
- Old Lures, Misc. Tackle, Life Vests
- Camping Equipment
- Other Misc.

COLLECTIBLES

- Iron Kettle
- 5 Gal. Copper Bucket
- 2 Blacksmith Vise
- Old Wrenches
- Metal Wheel Garden Cart
- Wood Wheelbarrow
- 4-5 Meat Cleavers
- Broad Axe, Bucksaw, Ice Tongs
- 2 Gal. Pickle Jar
- 3-4 Oil Lamps, Kids Sled
- Pair Boat Oars, Draw Knife, Planes
- J.D. Cast Iron Seat
- Wood Saw Box
- 8-10 Wood Duck Decoys
- 4 Sets Deer Horns Mounted on Board

HOUSEHOLD

- 2 Wicker Rockers & Side Table
- 2 Small Tables
- Plastic Folding Table



Sam **CRAWFORD Auction Service** LLC



TERMS: Cash or good check. Nothing removed until settled for. Not responsible for accidents. Lunch available. Statements made day of sale take precedence over printed matter. All items sell as is. No warranties given or implied.

417-998-6629
Cross Timbers, Mo.

CrawfordAuctionService.com



Sam
417-328-9137

Chase
417-399-1904

Chance, CAI
417-298-1751

Tom Poynter
Jack Lancaster

Jerry & Garnett Rinehart

23810 Cedar Haven Circle - Pittsburg, MO

ESTATE AUCTION

SATURDAY, FEB. 26TH AT 10 AM

1639 LAWRENCE 2140 • SARCOXIE, MO 64862

Directions: From 1-44 in Sarcoxie, MO take exit 33 and turn left onto Lawrence 1010, take left on outer rd. Lawrence 2140 and follow to auction on right. Look for Essick Auction Signs! **Owners:** The late Jimmie Coffey & Carol Coffey

LIVE & ONLINE BIDDING AVAILABLE! LIVE WEBCAST BIDDING BEGINS AT 12 PM(CST)
VISIT ESSICKAUCTION.HIBID.COM TO BID ONLINE!

Tractor/Truck/Motorcycles/Trailers:

2018 New Holland T4 75 powerstar cab tractor, w/655 TL loader, 4WD, power shuttle, 12 spd., sunroof, buddy seat, air ride seat, 385 hrs, kept in shop, great shape!; 2002 Dodge 2500 truck, 5.9 Cummins turbo diesel, 4x4, upgraded w/1 ton dually rear end, auto, 4 door, bed cover w/bed rug, super hitch, black leather interior, 193k miles, VIN #3D7KU28603G746634; 2012 Can Am Spyder RT Limited, heated seats, navigation, semi auto, stereo, 1 owner, 2,030 miles, VIN #2BXJBR16CV000495, SLICK!; 2002 Forest River Wildcat 5th wheel, 30'; 1 slide out, 1 – queen bed & bath in front, 2 twin bunks in back, VIN #4X4WCD292V002660; 2011 Haulmark Transport enclosed trailer, 16'x8'x6'6", rear ramp door, 4' side entry door, custom cabinets inside trailer, nice!; 1983 Horse trailer, 4 horse straight load, 18'x5.5'; 16" tires; 2005 Honda Shadow Spirit motorcycle, needs carburetor work, doesn't run, 4,960 miles!

Implements/Horse Tack:

New Holland H6750 disc mower, 9' cut, always shedded, great shape! Vermeer 504 round baler, Super I, twine tie, new belts; Howse 3 pt. Auger; Hesston model AGC 3710 hay tedder; 5-wheel dolly rake; New Holland model 450 7' sickle mower; Worksaver 22 ton hydraulic post driver w/skid steer quick attach/standard 3 pt.; Yard aerator; A&E cattle scale, missing cord; 4 x 9 railroad cart; 3 pt. hay spear; Quick attach forks; Longhorn 15" saddle; Buffalo Saddlery 16" saddle; 14.5" saddle; Misc. saddles, bits, bridles, tack, blankets, etc.; Antique & older double trees, harnesses, etc.

Tools/Anvils/Blacksmith tools:

JHM Competitor 260# anvil, like new; Several Peter Wright anvils: 132#, 116#, 165#, 114#, 130#; Hay Budden 126# anvil; 100 # anvil; 3 - SFC swage blocks, 7"x12"x3.5"; Antique leg vices; Several anvil parts & accessories; Anvil cone; 3 burner Gas forge, extra fire bricks & end openings; 24"x 36" hand crank with hood forge; Electric forge with a squirrel cage fan; Heavy duty welding table; Buffalo 200 silent forge blower; Stihl FS 90R weedeater; Stihl 290 chain saw; Metal tech scaffolding; Greenlee reel stands; Miller Thunderbolt arc welder, 225V; Coleman powermate 10HP generator, 5000 watt; Delta Miter saw; Schumacher battery charger; 4'x8' router table; Delta 10" table saw built into a 6'x9' table; Jet 6" jointer on stand; Jet bandsaw on stand; Jet dust collector, DC1100A; Delta 18" planer; Man Saver air post driver; Delta 6" bench grinder; Bosch grinder; Oil pan on wheels; B & D saw; Craftsman 1x42" belt disc sander/grinder on stand; Craftsman portable air compressor; Creeper; Misc. steel angle iron; 55 gal. barrel & several bags of coal; Yale & Town 1/2 ton chain hoist; Log roller; 3 – Ridgid 24" pipe wrench; Craftsman Sawzall; Craftsman tool-box; Antique anvil vice?; Antique well bucket; Railroad tie spike puller; Antique bench vice: Indian chief & Columbian; Simonds farrier rasp, misc. files & rasps; Simmons 8" bench grinder; Craftsman 3.5 ton floor jack; Columbia & Reed bench vice; Scale weights; Rex press; Lots of misc. chain; Craftsman 4 cycle mini tiller/edger; Bonaire swamp cooler, window unit; Lots of misc. hand tools, yard tools, blacksmith tools, etc.

Hunting/Outdoor Rec/Guitar/Household:

Mathews Solocam EZ7 Reverse Assist compound bow, Black Gold 5 pin sites, 70/29, QAD fall away rest, #1217112, like new!; Mathews Mission Craze compound bow, left-handed, 19" to 30" draw length, up to 70lb, Cobra sites, #1244304; Mathews Mission Menace compound bow, pink camo; Xcaliber Vortex cross bow, draw wt. 200 lb, manual draw back, xcaliber scope; Bushnell range finder; 3DR Drone, Solo, w/Hero 4 camera & backpack, used once!; 24 - Easton FMJ arrows, 340 spine, 30"; Misc. Ten Point cross bow arrows; Misc. XCaliber fire bolt arrows; 2 hard bow cases; Misc. archery tools; Caldwell Matrix shooting rest; Misc. camo Redhead coats, bibs, backpacks, boots, etc. Various sizes XL & XLT, new & like new; Rocky 800 gr. Thinsulate hunting boots, 11.5 wide, like new; Readhead W's sz. 8 hunting boots, like new; Lacrosse Red Bull waders, W's sz. 5; Flytech Waders, thinsulate, sz. 11; Lots of survival equipment for camping, hiking; Bakers & Chefs 8 burner propane grill on wheels, 4.5' long, used once!; First Act electric guitar & amp; Land Rider auto shift bike; Trek 7.3 FX mountain bike; Shimano clip in mountain bike shoes, men's 11.5, like new; Harley motorcycle boots M's sz. 11 & W's sz. 6.5; Leather motorcycle gear: chaps, jackets, boots, various sizes; Alpine Stars motorcycle jacket, XL, like new!; Serge Platini Italian leather motorcycle jacket; Scala Rider G4 powerset Bluetooth snow mobile intercoms; Several motorcycle & snow mobile helmets, various sizes, see photos; Ski Doo snow mobile gear: bibs (XL, 2XL), jackets (2XL) and boots (M's 13); BRP snow mobile boots sz. 7; X Cargo Sport 20 luggage carrier; Misc. large coolers; Lodge cast iron skillet; Bighorn fishing float, NIB; Elements 5th wheel cover, 28.1' to 31'; Misc. camping gear: chairs, tents, etc.; Misc. fishing gear/tackle; Misc. boating gear, life jackets, anchors, ski ropes, etc.; Misc. scuba gear: vest, fins, goggles, etc.; Frigidaire upright deep freeze; Older Whirlpool & Kenmore fridges; Misc. storage plastic shelves; Fisher Price bouncy seat; Baby Trend walker; Emeril Lagasse large stainless steel pots & pans, 10 pcs. Set; Pedestal sink; Older Kenmore Elite Oasis HT washer & dryer set; LG portable AC; Small desk; Rug Doctor carpet shampooer w/upholstery hose; Lots of great items in this auction! Way too much to list! Visit essickauction.com for the full listing & details!



Auctioneer's Notes: Jimmie & Carol have worked hard to accumulate some very well-maintained farm equipment, tools, vehicles, motorcycles, trailers and outdoor recreation items over the years. The offering in this auction has something for everyone! Don't miss this auction! **Auction Terms:** Cash/Check & CC accepted (3.5% fee). Announcements made on sale day will take precedence over any other printed materials. Not responsible for accidents, lost or stolen articles on or near sale site. All items sold as is/where is. 10% Buyer's premium FOR ALL ONLINE BIDDERS ONLY. Large tickets items may be held until checks clear!

ESSICK
AUCTION & REALTY

Dusty Essick - Auctioneer/Realtor
Phone: 417.883.SOLD
www.essickauction.com
dusty@essickauctionservice.com



#1 AUCTION SOURCE IN CENTRAL MISSOURI

SERVING 34 COUNTIES!



IN PRINT & ONLINE!

TO ADVERTISE YOUR AUCTION, CALL 417-532-9131

WEEKLY TRADER MAGAZINE

100 E. Commercial, Lebanon
 www.myweeklytrader.com
 www.facebook.com/myweeklytrader

Land Auction

108^{+/-} Acres

ONLINE BIDDING ONLY
7246 COFFEY HOLLOW RD.
MACKS CREEK, MO.
(HEART OF THE OZARKS)

*North East of Springfield, Mo
 *South West of Jefferson City, Mo.

BIDDING ENDS: (SOFT CLOSE)
THURS. MARCH. 3 @ 6:00 P.M.

OPEN HOUSE: Sat. Feb.
19 & 26 @ 1:00-3:00 P.M.

SELLING IN 1 TRACT!

Legal: Sect. 35 TWP. 38N R19W
 Camden County, Mo.

TAXES: \$1,940.00

PIN: 15-7.0-35.0-000.0-000-006.000
 Macks Creek School District



TRACT 1: 108 +/- ACRES (w/ Home & Outbuildings)

This farm consists of Timber & Pasture on bottom part of farm and up on the ridge. Creek runs through bottom part of farm. Farm has 4 strands of barbed wire fence (area's need repaired). Abundant wildlife! Niangua River & Lake of the Ozarks close by! • **HOME:** Built in 1994, 1.5 Story, 2,677 sq ft., (3) Bedroom, (2) Bath, Attached 2 car garage • **MOBILE HOME:** 1987, 672 sq ft., (2) BR., (1) bath. • **OUTBUILDINGS:** Pole Barn, 40'x46', built in 2001 • Pole Barn w/ lean-to on each side, 47'x48', built in 1994 • (2) Wood Framed Buildings, 46'x126', built for Hog Buildings in 1996, 1 of these buildings has roof caving in on east end. Not been used for past 5 yrs. Lagoon is still at east side of buildings. • Detached Garage, 24x24, built in 1990 • Water Well: Well drilled on farm in 1990. ENTIRE PROPERTY NEEDS A HAIRCUT & SHAVE! BEAUTIFUL SETTING!! Co-Broker participation welcome, please contact Cory. Property is being sold by the acre based on taxable acreage

DANIEL SCHMIDT & SHAWN SCHMIDT, OWNERS

Cory Craig

AUCTIONEER
217/971-4440

www.corycraig.com Register to bid, view catalogue & terms @ corycraig.hibid.com

Firearms Auction

Saturday March 5th, 2022 • 10:00 a.m.
Doors open at 8 AM on Saturday
Sale Preview - Friday, March 4th • 6-9 p.m.

The Red Shed
I-44 to exit 179 • 169 Truman St
Doolittle, MO 65550

SELLING 300 FIREARMS

SOME OF THE HIGHLIGHTS TO INCLUDE:



Lot 23 Remington Nylon 66 Black Diamond .22



Lot 37 Ruger Red Hawk 7 1/2" .44 Magnum



Lot 48 Browning A5 3" Magnum 12 Ga. (Japan)



Lot 66 Remington 141 "Gamemaster" .35 Remington



Lot 80 Ruger #1 .375 H & H



Lot 104 Taylor & Co. 1874 Sharps 45-70



Lot 113 Remington 1917 U.S. 30-06



Lot 121 Winchester M1 Carbine



Lot 131 Savage 1899B 25-35 w/26" Octagon Barrel



Lot 144 Colt 1911 .45 ACP Marked U.S. Property

Lot 150 Smith Cavalry Carbine 50 cal. (1864)

Lot 175 Remington 700 Stainless 7mm/08

Lot 185 Springfield US Model 1795 Type III Flintlock 69 Cal.

Lot 213 A.H. Fox Sterlingworth 12 Ga. SxS

Lot 220 DCA AR-15 5.56 cal. 16" barrel

Lot 253 SightMark Photon RT 4.5 x 42S Night Vision Scope

Lot 260 Henry "Big Loop" .22 carbine



Lot 150



Lot 260

J & J Sales, LLC

Pictures on www.auctionzip.com (auctioneer ID #28053) • Pictures also available on Hibid.com

573-341-5450
Office

573-465-4647
Julie Reagan

573-465-0642
JD Roach, Auctioneer

573-762-2227
Sale Day Number

jjsalesllc12@gmail.com

NEW ATF RULE - For ATF Form 4473, current name & address must exactly match the photo ID such as drivers license. **MUST MATCH!!** If not, we need supplemental government issued documentation with matching current address such as vehicle registration, property taxes, county or city utility bill. Cannot be a PO Box!
Concessions by Mt. Olive Baptist Church

Terms of Sale: Sale day announcements supercede any and all printed material. Photo I.D. required for buyer's number. No buyer's premium. Payment accepted by cash, check, debit/credit card. There is a 3% convenience fee unless paid by cash or check. Nothing removed until settled for. All state and federal firearms regulations will be followed. Not responsible for loss or accidents.

UTV - FARM EQUIPMENT - HAY - FURNITURE - PRIMITIVES - ANTIQUES AUCTION

SATURDAY FEBRUARY 19th, 2022 • 10:00 AM

LOCATED: 10000 HWY 63, LICKING MO

FROM HWY 63 8 MILES NORTH OF HOUSTON OR HWY 63, 7 MILES SOUTH OF LICKING. BREAKFAST, LUNCH & RESTROOMS AVAILABLE.

FOR PICTURES SEE WEBSITE OR AUCTION ZIP.COM

UTV - HAY - MOWERS FARM IMPLEMENTS - TOOLS

2013 BENNCH 4X4 UTV—APPROX 35 BALES 4X5 NET WRAP MIXED GRASS HAY, LAST YEARS, (MUST LOAD YOURSELF)--GRAVELY PRO TURN 60" ZERO TURN MOWER 25 HP KOHLER 150 HR—JOHN DEERE JZ75 PUSH MOWER—GROUND DRIVEN MANURE SPREADER—6 BALE HAY WAGON—KING KUTTER 3 PT CARRY ALL—DEAR BORN 6' 3 PT DISC—PREDATOR GAS AUGER—25 GAL SPRAYER—CREEP FEEDER—500 GAL LIQUID FEED TANK—TRASH PUMP—10 HEAVY PORTABLE CORRAL PANELS—ALUM EXT LADDER—T POST—WERNER LITTLE GIANT LADDER—CENTRAL PNEUMATIC ZIG AIR COMPRESSOR—PULL TYPE LAWN SPRAYER—PORTABLE AIR TANK—3 TON FLOOR JACK—6 DRAWER TOOL BOX—COMMERCIAL SHOP LIGHT ON STAND—PROPANE SPACE HEATER—RED BRAND BARB WIRE—4 PC 28' 1"X3" CHANNEL IRON—4X8 PLYWOOD SHEETS—SEVERAL 2X4'S—SEVERAL CEDAR PRIVACY FENCE PLANKS—SEVERAL PC'S ROUGH CUT CEDAR LUMBER—ROLL UP GARAGE DOOR & TRACK—STIHL 026 CHAINSAW—HEDGE TRIMMER—CRAFTSMAN WS210 WEED EATER W/ATTACH—2 WHEEL DOLLY—WORK LIGHT ON STAND—LG WOODEN GARAGE CABINET—SHOP LOCKER

FURNITURE

2) OAK CHINA CABINETS—SAMSUNG 32" FLAT SCREEN TV—OAK SECRETARY DESK—3 OAK BAR STOOLS—7 PC OAK FARMHOUSE DINETTE SET—3 TIER IRON/MARBLE SHELF—OAK CORNER CURIO—OAK MANTLE CLOCK—COO COO CLOCK—OAK MAGAZINE TABLE—ASHLEY LEATHER BURGUNDY SOFA—OAK LAWYER TYPE BOOKCASE—SM OAK DESK & CHAIR—KN SIZE 4 POST BEDROOM SET W/MARBLE TOP NIGHT STANDS—46" SHARP FLAT SCREEN & 39" VIZIO FLAT SCREEN TV'S—CHERRY SHADOW BOX TABLE—CHERRY JEWELRY BOX—55" SANYO FLAT SCREEN TV—OAK GLASS FRONT CABINET—SAMSUNG FRONT LOAD WASHER/DRYER—ADMIRAL REFRIGERATOR--3) OAK BAR STOOLS—OVER SIZED SUEDE RECLINER—2) GLASS TOP END TABLES—2) METAL BAR STOOLS—19" & 32" FLAT SCREEN TV'S—2) ROUND OAK TABLES—ETHAN ALLEN ACCENT CHAIR—WROUGHT IRON PATIO TABLE SET—METAL YARD SWING—AMANA MINI SPLIT—MAGNAVOX STEREO SYSTEM PEDESTAL—HYLA CANISTER VACUUM—WOODEN 2 DRAWER FILE CABINETS—STACKON 14 GUN SAFE—CUISINART GAS GRILL—CUISINART GAS FLAT TOP GRILL—PERFECT FLAME ELECT GRILL—BRINKMAN SMOKER—CAST IRON CHIMINEA—BROOM CABINET



ANTIQUES - PRIMITIVES DISHWARE - INDIAN ARTIFACTS

BRUNSWICK VICTROLA WORKING CONDITION—WOOD WELCOME BENCH—METAL GLIDER—3 METAL PATIO CHAIRS—IRON GLIDER—HANSON BABY SCALES—HANSON COTTON SCALES—FAIR BANKS SCALE—AMERICAN PRODUCE SCALE—NATIONAL POSTAL SCALE—MILK CRATE W/JUGS—RAILROAD LANTERNS—COAL MINER LAMP—HAND PAINTED CROSS CUT SAW—HAND PAINTED CHAINSAW BAR—SEVERAL LONGHORN MOUNTS—DEITZ LIGHT—NESTING BOX—WORKING STOP LIGHT ON PEDESTAL—DIETZ LANTERN—RADIO FLYER WAGON—LG ASSORTMENT OF ROAD SIGNS—METAL GARDEN PLOW—METAL WASH TUB ON STAND—METAL PELICANS—LG METAL ROOSTER—WASH TUB—WEATHER VANE—FIRE KING BLUE CHARM DISHES SET 8—S/P SHAKERS SEVERAL—BLUE BANDED CROCK PITCHER—BLUE ROLLING PINS—BLUE ROSEVILLE BANDED CROCK BOWL—BLUE ANTQ CROCK BOWL—SEVERAL HALL ANTQ TEA POTS—40 HALL ALLADIN TEA POTS—DIAMOND BLUE ROSE CHINA SET—A&W PITCHER & GLASS—SUNSHINE COFFEE JARS—BLUE CLAY CITY BOWL SET—8) BLUE FOSTORIA GLASSES—PRESCOTT PUNCH BOWL SET—SEVERAL ASSORTED PC'S LONGABERGER DISHWARE, YELLOW & IVORY—MISC CORNINGWARE—24" WOODEN INDIAN—36" CERAMIC INDIAN—SEVERAL CERAMIC INDIAN PC'S—INDIAN PICTURES—INDIAN NATIVITY SCENE—INDIAN ARROWHEAD CLOCK—NWTF INDIAN ARROW SHADOW BOX—NWTF HAND PAINTED FEATHER—LG SELECTION OF HOLIDAY DECORATIONS

OWNER: DEBBIE SOUTHERN



MELTON AUCTION & REALTY CO LLC



www.MeltonAuction.com | Roger@MeltonAuction.com
Roger Melton | Nixa, Mo | 417-830-0153 or 417-725-1801
Brad Cole | Nixa, Mo | 417-840-2950
Tanner Foster | Galena, Mo | 417-840-5519

809276

ESTATE AUCTION

Saturday, February 19th, 2022 ~ 10:00 AM

LOCATION: 201 East 5th, Lockwood, MO (Watch For Signs)

Auction For Geraldine & Jimmy Garrison Estate



Antique & Retro Furniture & Appliances

4 Pc Ant Retro Bedroom Suite Inc Full Bed, Chest Of Drawers, Dresser W/Mirror & Nightstand, Ant Vanity Stool, Ant Fireplace W/Mantle, Ant End Tables, Ant Lester Philadelphia USA Piano, Ant Counter Cabinet, Ant Metal High Chair, Ant Wood Toy Box W/Roy Rogers On It, Ant Retro Medicine Cabinet, Ant Round Table, 2 Ant Sewing Machines In Cabinet, 2 Old Child's Chairs, 4 Ant Retro Living Room Chairs, 3 Retro Ottomans, Retro 3 Cushion Couch, Retro Glass Front Display Shelf, 2 Wood Prim Chest Of Drawers, Wood Prim Dresser, Prim Wood Bench, 2 Swivel Rocking Chairs, 2 Recliners, 2 Bakers Racks, Lamps Some Retro, Sm Roll Top Desk, Two 4 Leg Hall Trees, Ant Light Fixtures, Prim Kitchen Table & Chairs, Natural Gas Heater, 110 A/C Unit, Ant Retro Brown Brand Gas Cook Stove Was Top Of The Line In Its Day, Ant GE Refrigerator, Maytag Apt Size Washer & Regular Size Electric Dryer, Side By Side Refrigerator, Other Items Not Listed

Antiques, Collectibles & Households

Ant Lionel Train Set, Old Toys Inc A Neat Pinocchio, Ant 3'x3' Wood Ship, Old Dolls, Ant Humpty Dumpty Spice Set, Ant Meat Grinder, Ant Metal Bread Box, Ant Colored Handled Kitchen Utensils, Old Lockwood Yearbooks, Ant Metal Boxes, Old Renaissance Pcs, Little Rascals Bobble Heads, Old Belt Buckles, Old Jewelry, Ant Cameras, Old Clothes & Purses, Very Lg Lot Of

Quilting & Sewing Supplies, Old Linens, Old Cookbooks & Other Old Books, Music Boxes, Ladies Head Vase, Lg Lot Of Ant Knick Knacks Most From The 30's & 40's, Old Glassware Of Various Kinds, Some Unique, Ant Wheat Dishes, Aluminum Ware Pcs, Old Sports Pcs, Old Boy Scout Bag, Old Luggage, Stainless Mixer & Other Kitchen Appliances, Galvanized Trash Cans, Cast Iron Pcs, Wrought Iron Pcs, Lots Of Christmas & Other Holiday Décor, Other Items Not Listed

Silver, Gold Coins & Currency

Gold Coins Inc Key 1792 Portugal Gold Peca Coin That Is Graded & Confirmed, Another Gold Comm Coin, Approx 40+ Silver Dollars Inc Key 1894O, Key 1901, Key 1888S, Key 1890S, 1883CC, 1881CC Both GSA Graded, Key 1878 W/7TF, 1904O, 1889, 1878S, 1879, 1880O, 1881O, 1881S, 1882O, 1884O, 1885, 1888, 1889S, 1890, 1894O, 1896, 1898, 1900, 1900O, 1901O, 1904, & Others, Some Silver Eagles, Approx 20+ Silver Halves Inc Bust, Seated, Barber, Franklin, Walking Liberty Inc 1941 Graded MS63, Approx 20+ Silver Quarters Inc Barber, Seated & Others, Several Type Coins Inc 2 & 3 Cent Pcs, Silver Dimes, Indian Head Pennies, Buffalo Nickels, Pawn Stars "The Old Man" Silver Coin, Proof & Mint Sets, Currency Inc 1780 Colonial Currency, \$7 Massachusetts, Hawaii WWII Note, Comma North African WWII Note, Silver Certificates & Others



Auctioneers Note: It Is An Honor To Be Conducting This Auction For The Garrison Estate. Mrs. Garrison Worked At The School For Many Years. Her & Jimmy Were Both Well Respected Members Of The Community. If You Are Into Retro Items You Do Not Want To Miss This Auction. Neat Furniture & Small Antique & Collectible Items. There Will Be Something Here For Almost Anyone. Coins Are From The Carter Estate And Are Excellent As Well So Please Plan Now To Attend. **Sale Order: Furniture & Appliances Sell First Then Move Directly Into Antiques, Collectibles & Households. At Approx 1:00 PM Will Offer Coins & Currency. Remainder Of Smalls Will Finish Auction. See Ya There!!!**

Terms: Cash or check with proper ID. Now accepting most major credit cards. Nothing removed until settled for. Statements made the day of sale takes precedence over printed material. Everything sold as is where is. Not responsible for accidents. Restroom available. Concessions Provided. Check our website for upcoming auctions and for additional pictures!!



NANCE AUCTION SERVICE

No Matter How BIG or small, We Do Them All!!!

Col. Bill Nance 417-214-0093



ONLINE ONLY EQUIPMENT AUCTION

Internet Bidding closes at 11:00 am CST
THURSDAY, FEB. 24, 2022

www.SextonAuctioneers.com
BID NOW!
Much more equipment online!



2015 International Prostar



2014 Peterbilt 579



1995 Ford LA9000



2007 Wilson Hopper / Grain Trailer DWH-551



1983 Nutall 225E fixed neck lowboy



1987 Frameless End Dump Truck With Homemade title



2020 Kenworth W900L

2009 Caterpillar 963D



2005 Peterbilt 357 Dump Truck



2007 Mack CV713 Dump Truck



2000 Kenworth T800 Dump Truck



2003 Kenworth W900 Dump Truck



2003 Kenworth W900 Dump Truck



2000 Western Star 4964SX Dump Truck



2012 John Deere 6115D



Kubota B2601 HSD tractor Backhoe loader



JLG SkyTrak 10054 Telehandler



2007 Genie TGH 1056 Telehandler



Wiggins Yardbull WD256 Forklift truck



2012 John Deere 35D



2020 Case TR310B



2018 Case TV380



2017 John Deere 331G



2019 Bobcat T595



2018 Bobcat T770



2010 Case 450 series 3



2019 Grand Design Reflection Camper Trailer



2012 Ford F-250



1998 Dodge Ram Pickup Truck



2010 Chevrolet Tahoe



2005 Ford F-550



150+ Skid Steer Attachments



CALL TYLER SEXTON TO SELL YOUR EQUIPMENT!

www.SextonAuctioneers.com

For any questions call our Office: 314-529-0124

Auction Contacts Tyler Sexton | Gary Sexton

5182 US Hwy. 63 • Pomona, MO • email: Sales@SextonAuctioneers.com

Next Auction
APRIL 28

PUBLIC AUCTION

Saturday, February 26, 2022 • 9:00 a.m.

Come Enjoy The Day With Us! Good Food, Indoors with Lots of Seating

SHOW-ME AUCTION CENTER

17829 Shadey Brook Dr. • Versailles, MO 65084

RING 1: 9:00AM HOUSEWARES, ANTIQUES, FOLLOWED BY FURNITURE; 1:00PM CAR & BUILDING MATERIALS RING 2: 9:30AM STORE EQUIPMENT



VEHICLE

- 2014 Volkswagen Jetta, 85,981 Miles, Front End Damage, Clean Title

STORE EQUIPMENT

- 4 Check Out Counters
- 7 File Cabinets, 4-Drawer
- Sharp Cash Register
- Tyler 6x12 Island Produce Case
- 4x6 Island Produce Case
- 4' Open Refrigerated Case
- 2 - Royal 6' Open Refrigerated Case Self-Contained
- Lantech 2000 Pallet Wrapping System
- True 4' 6" Upright Freezer Display, 2-Door S/C
- Victory SS 2-Door Freezer S/C
- True 2-Door Cooler S/C
- True 2-Door Pepsi Cooler
- Ice-O-Matic Ice Machine w/ Chest
- True 2-Door Dr Pepper Cooler
- 2-Door 5-Shelf Lighted Pastry Display Case
- Lot Scrap Copper
- 2-Double Swinging Interior Doors, 8' Tall x 3.5' Wide
- SRC Walk-In Cooler Door, 5'
- Bohm 5 Fan Evaporator, Like New
- 2 Small Evaporators
- 3 18" End Cap Shelves
- Small Crosley Chest Freezer
- Open-Top Pizza Freezer on Wheels
- 12' Hussman Deli Case
- 4' Leader Self-Contained Cooler Case Glass Shelves, Granite Top, Nice, 2016 Model
- 4' Kenny Penny Hot Food Case S/C
- 5' True Refrigerated Sandwich Prep Table
- Deli Case
- 6' Master Bilt Deli Case S/C
- 2 True 6' Deli Cases S/C
- 2 McGray 8' Deli Cases S/C
- Hussman 12' Deli Case, Curved Glass
- Hussman 8' Deli Case, Curved Glass
- Javataza 13-Variety Coffee Unit w/ Grinder
- 2 - Banana Trees
- Homemade Rustic Produce Display w/Mirror, Fancy
- 2 - 30" x 5' Roller Display Tables
- 9T-shirt Bag Racks
- 32" x 74" Wooden Display Table
- 3' x 5' and 3' x 4' Display Tables on Rollers
- Lot Asst Baskets Etc.
- Lot Meat Bandsaw Blades
- 4-Tier Basket Display
- 5-Shelf Display, Wooden
- 3 - Georgia Pacific En Motion Towel

- Dispensers
- Cecilware 2-Basket Deep Fryer, 110V
- 3 - Tabletop Shrink Wrapper
- 3 - Berkel Meat Slicer
- 30" x 60" Butcher Prep Table, SS Back
- 4' Aluminum Dunnage Rack
- 2 Kyson Warren Open-top Freezer Display S/C
- Chest Freezer
- Small Jello Display Freezer
- Blue Bunny Ice Cream Novelty Case
- 3-Vat SS Sink w/Drain Board and All Faucets
- Berkel Automatic Meat Slicer
- Small SS Hand Washing Sink w/ Faucets
- 2 - 4' Prep Table, Various Heights
- 88" x 27" S/C Open Refrig. Tub
- Stan Hotdog Roller
- Grindmaster Coffee Grinder
- Floor Model Heat Sealer
- 4' SS Top Prep Table
- Hobart Hanging Produce Scale
- 3 - Hobart Meat Slicers (1-Auto)
- SS Cheese Cutter
- SS Produce Table w/Scrap Bin
- Floor Model Heat Sealer
- 1 - Globe Automatic Slicer
- Hobart Tabletop 20-Quart
- 2 - Wooden 8' Display Tables
- 8' SS Top Work Table on Rollers
- Lot Plastic Rectangle Butcher Tubs
- 5 Asst Bakery Racks
- Electrolux HSG Panini
- 2 - 8' SS Tabletops (1 with back)
- 1 - 4' SS Tabletops • 2x2 SS Table
- 4 - Aluminum Roller Dollies
- 3 Vat SS Sink
- Hobart Floor Model Shrink Wrapper
- 5' Prep Table with SS Back
- 72" x 16" SS Prep Table
- Mettler Toledo Digital Battery Scale
- Lot Mop Buckets, Trash Cans, Wet Floor Cones
- Global Electronic Scales
- 2 Mettler Toledo Platform Scales
- Gondola 80" - 24" Double Sided Shelving
- Gondola 40" - 18" Double Sided Shelving
- Gondola 32" - 18" Double Sided Shelving
- Gondola 32" - 18" Double Sided Shelving
- Gondola 44" - 20" Wall Shelving
- Gondola 7 Skids Misc. Shelving
- 20" - 18" Island Shelving
- 2 Section Pallet Rack
- 7 Skids Island Shelving
- Hobart Scale w/ Printer

- LEM 330lb Digital Scales, New
- Egg Washer • 12 Egg Baskets
- Stainless Egg Drying Table w/Candler
- Kenmore 21.3 cu ft Chest Freezer
- Old General Electric Refrigerator, Works
- 3 - Oak Adjustable Display Rack on Rollers
- 2 - Wooden Display Bins on Rollers
- 5 - Produce Bag Dispensers
- 30 - Wire Racks, Shelves All Types
- Tyler Soft Serve Single Barrel Counter Top Ice Cream Machine - w/Syrup Dispensers and Shakes
- C&D Battery Charger for Fork Lift
- 6 Asst Roller Carts
- 15+ Shopping Carts
- 12 Roller Frames - 2-Vat SS Sink
- 10 Asst Wooden Displays
- 2 Office Desks • 3 Office Stands
- Small Frigidaire Refrigerator
- Large 3-Vat Sink with Drain Board
- 8 Black Wooden Shelf Units
- Wooden Lollipop Display Barrel
- Deli Supplies - Crock Bowls, Bowls Plus, Ladles, Serving Spoons, Knives, Dippers
- Trays, Tubs, Etc • 22 SS Bumper Poles
- 28 New 4-Bulb Light Fixtures, 4 Ft T8
- 20 Pallets of Shelf Parts, Etc
- Crown Pallet Jack
- Crown Electric Forklift 3000, 8816 Hrs, SS 1A259179, New Battery 1 Yr Warranty, New Non-marking Tires - Nice Machine
- Storage Trailer
- 8 x 19 Walk-In Cooler with Retail Glass Door, Complete with Compressor
- Lot Walk In Cooler Panels
- 45' x 102' Stoughton Trailer Storage
- 30-Lbs R22 Freon
- This is just a partial listing...

- Suite, 4-Piece with New Box Spring & Mattress
- Tan Couch • Maroon Recliner
- Drop-Leaf Desk • 4 Bookshelves
- 2 Train Pictures • Hollywood Bed
- Door Lamp • Towels
- 2 Maple Dresser w/Mirror & 2 Chests
- Computer Desk • Small Lamps
- Wrought Iron Porch Chairs
- Birdbath • Small Desk • Small Buffet

BUILDING MATERIALS

- Several Stacks New Metal & Trim
- Used Doors • Used Cabinets & Trim
- Lot New Oak Door Casing

ANTIQUES

- Sack Carrier • 2-Man Saw
- Collectable Old Books
- Large Mirror • Claw-Footed Bath Tub
- ORBON Old Gas Cook Stove
- Western Flyer Bicycle
- Double Trees • Salfine Tin
- Metal Fan • Wooden Bowl
- Cherry Stoner • Cream Can
- Old Wood Furniture Clamp & Plane
- 3 Buckets Blue/Green Insulators
- Glass Ball-Foot Piano Stool
- Old Trunk • Old Cash Drawer

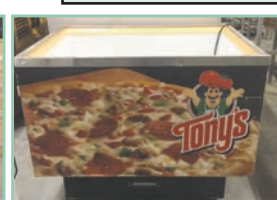
APPLIANCES

- Electric Roaster • Soup Mugs
- Canisters • Electric Fry Pans
- Pots & Pans • Slow Cooker
- Baking Dishes • Pfaltzgraff Set Dishes
- Silverware & Utensils
- Shark Vacuum Cleaner
- Large Lot Records, Big Band Jazz & Country Western • Electric Heater

MISC.

- 4 Stepladders • Golf Clubs
- Lot Tackle Boxes • Fishing Rods
- First Aid Kit • Extension Cords
- Battery Charger • Skill Saw
- Hand Tools • Tripod
- Bamboo Rods • Large New Mailbox
- Fish Fryer • Backpack Seeder
- Lot Tarps • 2 Free Standing Canopies
- Calf Bottles • 2 Large Ride-on Toy Ponies

AUCTIONEER'S NOTE: Ring #1 will have a nice rounded selection. There's something for everyone. Ring #2 if you are looking for store equipment, don't miss this sale. Lots of nice pieces, some late model. *Wilmer*



This is a partial listing. For more photos and information, see auctionarrows.com or auctionzip.com (ID 30027)

Show-Me Auction Center Owners:
WILMER & ANNIE HOOVER
 573-789-2215 • 573-378-4908

Auctioneers:
Col. Doug Dieckman - 660-287-1962
Col. Tony Stephens - 573-378-8803

For Information, Call
Earl Ray Zimmerman
 573-378-4335

Not responsible for accidents. TERMS: Cash or Check with Proper I.D. • All statements made date of sale take precedence over printed material. After 30 days, all items not picked up become auction property.

BUFFALO LIVESTOCK MARKET LLC



276 Hwy 32 West
Buffalo, Missouri

February 12th, 2022

Receipts: 2052 Head
Feeders \$5 to \$20 Higher.
Monthly Wean VAC Special

REPRESENTATIVE STEERS

250-300 @ 185.00 to 270.00
300-400 @ 184.00 to 230.00
400-500 @ 190.00 to 225.00
500-600 @ 189.00 to 215.00
600-700 @ 165.00 to 189.00
700-800 @ 150.00 to 167.00
800-900 @ 148.00 to 159.50
900-1,000 @ 139.00 to 148.50

REPRESENTATIVE HEIFERS

300-400 @ 170.00 to 190.00
400-500 @ 160.00 to 189.00
500-600 @ 150.00 to 180.10
600-700 @ 150.00 to 163.50
700-800 @ 144.00 to 155.50
800-900 @ 127.00 to 140.50

FEEDER BULLS

400-500 @ 168.00 to 192.00
500-600 @ 164.00 to 192.00
600-700 @ 130.00 to 146.00
700-800 @ 118.00 to 120.00

BRED COWS

750.00 to 1,200.00

SLAUGHTER COWS

Big Boning Flesh 70.00 to 84.00
Med Flesh Cows 61.00 to 70.00
Thin Flethy Cows 50.00 to 61.00
X Thin or Cup 50.00 Down

SLAUGHTER BULLS

Med Dressing 101.00 to 114.00
Low Dressing 85.00 to 99.50

NEXT WEAN VAC

March 12th, 2022

MON-WED MARKET REPORT

Listen to KJEL 103.7FM • Lebanon or KYOO 99FM • Bolivar

VIEW OUR SALES AT CATTLEUSA.COM

CALL FOR TRUCKING OR ON-FARM VISIT

Lyle Caselman • Owner-Manager
417-345-7876 • mobile 417-533-2944
Leon Caselman • Owner
417-345-4514 • mobile • 417-588-6185

MID MISSOURI STOCKYARDS

REGULAR SALE EVERY THURSDAY 11AM

WATCH OUR WEEKLY SALE IN REAL TIME ON DVAUCTION.COM

For Farm Visits, Market Updates, or Trucking

Call Zach Cox 417-777-1320

Dan Romine 573-578-4939

Competitive Buyers!
Competitive Commission!
Competitive Market!

Barn: 417-532-9292

I-44 • Exit 123 "just outside of Lebanon"
17505 Route 66, Phillipsburg, MO 65722

For weekly market updates, visit us at
www.midmoststockyards.com

KITCHEN FAUCET MOEN: Single lever, sprayer, new cartridge. \$45 obo. 636-239-2695. Washington.

THE HEART OF THE SPRING BOOK. A Bennett Spring Novel by Laura L. Valenti, 161 pages. \$6.50. 417-532-2045. (Leave message and phone number). Lebanon.

5 BLUE CORNFLOWER CORNINGWARE BAKING BOWLS: With lids, no chips. \$60. 417-532-2344. Lebanon.

MINI FARM 18.8 M/L SURVEYED ACRES: 3-bedroom ranch, shop. St. Francis County. Best Offer. Details Call 417-255-6640.

I BUY GRAIN BINS: All sizes and conditions. Price depends on size and condition. Please call 573-280-5638. Sunrise Beach.

M FARMALL: With SM motor, 417-349-2908. Cabool.

350 FARMALL: Runs good, TA works. 417-349-2908. Cabool.

OMAR'S LOGGING & DOZING

⇒ Oak & Walnut
⇒ Excellent Prices
Amish Owned & Operated



LEAVE MESSAGE: 417-741-0440
Hartville & Surrounding Areas

KENMORE 27" BUILT-IN SINGLE OVEN: Self-cleaning, black, \$100 or best offer. 636-239-2695. Washington.

A KID GROWING UP ON ROUTE 66 BOOK: By Bill Wheeler, Waynesville/Pulaski County area, many photos. \$6.50. 417-532-2045. (Leave message and phone number). Lebanon.

WOODED ACREAGE: Paved road, Collins MO, 5 acres m/l. \$25,000. Collins.

CORELLE DISHES: different patterns, 48 piece set for \$40. 417-532-2344. Lebanon.

AUSTRALIAN SHEPHERD PUPPIES: 573-202-3132.

JR'S 4th Annual CONSIGNMENT AUCTION

Saturday, March 19, 2022

Levi Zook, 4875 Hwy BB Hartville, MO 65667
417-741-2070 • 417-741-2312

Directions: From Lebanon, MO take Hwy 5 South approx. 30 miles to Hwy Z, left on Z, 2 miles to Hwy E, right on E to Hwy BB, right on BB to auction on left.

Now taking consignments for farm machinery, horses, antiques, guns, households, and tools. Large selection of farm machinery, antiques, and hand tools already consigned. Loads coming from Wisconsin, Kansas, Iowa, Kentucky, and the surrounding areas.

Now Taking Consignments!
Advertising deadline February 26th
Auctioneer: Martins Auctions

Commission Rates: 20% - up to \$100; 10% - up to \$500; 7% - \$500 & up • \$300 cap on horses




To consign horses call Reuben Glick 417-554-3201

ROUND GLASS DINING TABLE: 54" wide, 4 chairs, \$50. 417-532-2344. Lebanon.

OLD HANDMADE FULL-SIZE QUILTS: \$50 each. 417-532-6561. Phillipsburg.

VINTAGE TWIN THRILLER NANCY DREW BOOKS: 17 editions \$50 for all. 417-532-6561. Phillipsburg.

FIDDLE, BOW & CASE: Copy of a Stradivarius, \$200. 573-764-4435. Gerald.

MEDINA FIDDLE, BOW & CASE: \$75. 573-764-4435. Gerald.

BIG HORN 16" SADDLE: Dark leather, excellent sharp, \$200 Firm. 573-205-9401. Belle.

PIG FEED 450LB: \$200 firm. 573-205-9401. Belle.

BRAND NEW AREA RUGS: Good on ceramic and wood flooring. White fluffy with gray squares. \$125. Call between 8 am-8pm. 417-664-4278. Lebanon.

AUSTRALIAN SHEPHERD PUPPIES: 12 Weeks Old, UTDI shots, Will trade for farm animals or rehoming fee. 417-967-6493. Roby.

WANTED: Transmission, automatic, 1957 Chevy car, cash paid. 573-636-8000. Jefferson City.

4 USED TIRES FOR SALE: 31X10.50X15, 6-ply, excellent trailer or implement tires. \$60. 573-743-6257. Steelville.

1954 CHEVROLET PICKUP GAS TANK: And other misc. front end parts. 573-732-3557. Bourbon.

ORGANIC CHICKEN LITTER/HIGH CALCIUM LIME: Delivered trailer loads, \$120T. Spreader truck available. 800-807-9612.

28X52 AMISH BUILT 1996 DUTCH HOME: One owner, 3 bedroom, 2 bath, utility room, vinyl siding, new architectural shingles, new carpet & pad, 2x6 walls, central air, big stone fireplace. This home is in perfect condition. Everything guaranteed. Includes new vinyl skirting. Free Delivery and set up. \$49,995. Call Charlie at 573-786-4003. Hwy 8 & Hwy Y. Steelville.

WTB SMALL HORSE WALKER: Good or bad shape. 573-953-7589. Dixon.

WTB GOOD SADDLE HORSE: 573-953-7589. Dixon.

RUGER PC9MM CARBINE: With scope, extra mag, loader, bought new. \$650. 417-844-43149. Springfield.

2006 CHEVY ½ TON: 198,000 miles, 2 wd, mechanically good condition, few dents & scratches. \$4,500. 417-967-2251. Houston.

HORSEMAN MAGAZINES: Some as old as the 1940's. Information and Articles of all kinds about horses and horse related things. \$2.00 each 573-364-1779. Rolla.

NEW POWERFUL MINI CROSSBOW: \$100. 573-327-9068. Desloge.

2 NEW DVD PLAYERS: \$90 for both. 573-327-9068. Desloge.

TOTE FULL OF AUNT JEMIMA STUFF: \$200 for all. 573-327-9068. Desloge.

DARDEN PROFESSIONAL TIMBER HARVESTING, BUYING STANDING TIMBER: Great prices, improve wildlife habitat and improve forest health. State Certified & Fully Insured! 573-247-4808 or 573-739-1122. Salem.

FORD 5600 DIESEL TRACTOR: 60hp. Good. \$7,850. 573-765-4406. Richland.

KILMER FARM EQUIPMENT CONSIGNMENT AUCTION

SATURDAY, MARCH 5 • 9:30 AM

14769 Cattle Lane, Versailles, MO 65084

Directions: At the Intersection of Hwy 5 and Hwy 52 in Versailles, go North on Hwy 5 for 1 mile to Cattle Ln then turn Right or East and go ¾ mile to Sale Site.



**TRACTORS, CONSTRUCTION EQUIPMENT,
TRUCKS AND TRAILERS, GRAIN CARTS AND WAGONS,
CUTTERS, TILLAGE, COMBINE AND HEADS,
FEED MIXERS, MISC. EQUIPMENT, HAY EQUIPMENT,
SILAGE EQUIPMENT**

Wheeler 
AUCTIONS & REAL ESTATE
23101 HWY. 24, PARIS, MO 65275 | 660-327-5890
WWW.WHEELERAUCTIONS.COM

BID LIVE Live Online Bidding Powered By: **proxibid**

KILMER FARM EQUIPMENT, LLC

14270 Hwy. 52, Versailles, MO 65084

(573) 378-6615

For more info and photos:
www.wheelerauctions.com

WE BUY White Oak Logs!

- ✓ Top prices for your logs
- ✓ Experienced log buyers
- ✓ Professional service

Chad Cook | Salem Wood Products
417.718.2950
 5 miles north of Salem, MO on Hwy 19



www.independentstavecompany.com

REGISTERED POLLED HEREFORD BULLS FOR SALE: Ready to go to work. 417-259-0588. Hartville.

L3901 KUBOTA 4WD TRACTOR WITH LOADER: 38hp, hydrostat transmission. \$22,900. 417-270-1505. West Plains.

JOHN DEERE 310C DIESEL BACKHOE LOADER: \$11,500. 573-765-4406. Richland.

PULL TYPE 10 FT BOX BLADE WITH CYLINDER: Near new, \$1,800. 573-765-4406. Richland.

IHC 1086 DIESEL TRACTOR: Cab & air, 130 hp. runs nice, \$13,000. 573-765-4406. Richland.

2002 F150: 4wd, automatic, power, extended cab, 180,000 miles. \$6,800. 314-972-2903. Mineral Point.

MOBILE HOME TIRE AND WHEELS: \$50 each. Call Charlie at 573-786-4003. Steelville.

CABLE PULLING JAW GRIP: Klein 1684-5, excellent condition. \$150. 314-303-7857. Cedar Hill.

BRUSHOG 12815: 15ft. Hyd. Fold Brush cutter, very nice. \$17,000. 573-765-4406. Richland.

PICKUP TRUCK BEDLINER: Standard size, fits Ford F150-F350. \$40. 314-303-7857. Cedar Hill.

GM ½ TON 4-WHEEL DRIVE FRONT AXEL HOUSING: With 3.07 gears. Fits a 77 to 87. \$80. 314-303-7857. Cedar Hill.

JOHN DEERE 566 ROUND BALER: Monitor, kicker. \$5,200. 573-765-4406. Richland.

CALVES ARE GROWING!

ARE YOU READY FOR THEM?

GET PREPARED!

Stop on by Steelville Feed & Farm for all of your calving and weaning products and be prepared for this "Growing" Season.



WE'RE HERE FOR YOU NO MATTER THE SEASON!

STEELVILLE FEED & FARM

573-775-2650 • 11 Cobblestone Rd., Steelville
 Mon-Fri 8am-5pm • Sat 8am-12pm • Sun Closed

MILLER 10 FT OFFSET DISK: \$3,950.
573-765-4406. Richland.

VICON 10FT. DISK MOWER: \$2,650.
573-765-4406. Richland.

IHC 10FT. WHEEL DISK: \$1,800. 573-765-4406. Richland.

TANDEM AXEL 750 GALLON PASTURE SPRAYER: Hyd pump, single jet. \$2,300.
573-765-4406. Richland.

JOHN DEERE 435 ROUND BALER: 4X6, monitor, net wrap. \$7,450. 573-765-4406. Richland.

WEATHERED BARN WOOD SIDING: 10" wide. 573-729-7226. www.pineridgerustic.com Salem.

OFFICIAL TRACTOR OF TOUGH™

INTRODUCING THE ALL-NEW 5100 SERIES



Marshfield Machinery Inc.
222 E. Madison • Marshfield, MO 65706
417-859-2117 • www.marshfieldmachinery.com

*2018 data including all Mahindra group brand sales.
MahindraUSA.com © 2020 Mahindra USA Inc.



NEW MAHINDRA TRACTORS

1626 4WD & LDR 26HP IN STOCK
 2660 4WD & LDR 60HP IN STOCK
 2660 CAB 4WD & LDR 60HP IN STOCK
 2670 CAB 4WD & LDR 70HP IN STOCK

USED TRACTORS

IHC 826 92 HP 9,000

USED ROUND BALERS

HESSTON 945 4X5 9,000
 JOHN DEERE 375 5X4 3,500
 HESSTON 560 5X6 2,000
 NH 850 5X5 1,500
 JD 336 SQ BALER 4,000

USED MISC.

MF 8 WHEEL RAKE 3,000
 JD 17FT TEDDER 2,500
 VERMEER 8 WHEEL RAKE 1,750
 M&W 8 WHEEL RAKE 1,750

Marshfield Machinery Inc.
222 E. Madison
Marshfield, MO 65706
417-859-2117
www.marshfieldmachinery.com

Starnes Auto LLC

22115 Rt. 66 • Lebanon, MO 65536

417.718.2707 Cell
417.588.3159 Office
www.starnesauto.com

2006 CHEVY SILVERADO 4DR 4WD
MAROON, VIN#8612, 142,XXX MILES ... \$8,500

2007 PONT VIBE
GREEN, VIN#2356, EXEMPT \$3,950

2007 PONT G6
GRAY, VIN#2946, 151,XXX MILES \$3,850

2008 FORD ESCAPE
GRAY, VIN#8387, 148,XXX MILES \$5,200

2010 CHEVY MALIBU
WHITE, 164,XXX MILES CALL!

2010 PONT G6
WHITE, VIN#8044, 193,XXX MILES \$3,850

2011 FORD FUSION
WHITE, VIN#4906, 128,XXX MILES \$6,250

2011 CHEVY EQUINOX LS
GRAY, VIN#0426, 157,XXX MILES \$6,200

2011 CHEVY MALIBU
BLACK, VIN#9800, 139,XXX MILES \$4,850

2013 CHEVY CAPTIVA
SILVER, VIN#9033, 126,XXX MILES \$7,200

2013 CHEVY EQUINOX
BLACK, VIN#8234, 170,XXX MILES \$7,200

2015 NISSAN FRONTIER
BLUE, VIN#3273,
106,XXX MILES **COMING SOON**

WE DO ALIGNMENTS!

FORD 4610 DIESEL TRACTOR: Canopy with Brush hog loader. \$12,500. 573-765-4406. Richland.

JOHN DEERE 567 ROUND BALER: Monitor, kicker, net wrap. \$9,650. 573-765-4406. Richland.

LOG SIDING: 2X8 Pine/Western Cedar www.pineridgerustic.com 573-729-7226. Salem.

IHC 986 DIESEL TRACTOR: Canopy with Westerdorf T.A. 28 loader. \$13,000. 573-765-4406. Richland.

HISTORY OF ST. ALBANS, MO. : H.B. \$20. 417-532-2045. (leave message and phone number). Lebanon.

USED MOBILE HOMES: Call David at VILLA HOMES IN ROLLA 573-578-8072. Rolla.

CALUS LOGGING

20 YEARS EXPERIENCE

Buying Standing Timber
Walnut & Oak

Joe Calus, Owner
417-926-4606 • MTN. GROVE

CERTIFIED

MISSOURI GUN CO LLC

Your Reloading Headquarters for Southern Missouri.

W, Th, F: 10am-6pm
Sat: 10am-2pm
Sun, M, T: CLOSED

BUY. SELL. TRADE.

516 Ozark St., Cabool, Mo. • 417-962-2666



Wright Spray Foam Insulators, LLC
Commercial & Residential
Call for FREE Estimates!

Ervin Gingerich
417-926-2052
B. Eli Yoder
417-746-4932

BUYING MOBILE HOMES: Call David at VILLA HOMES IN ROLLA 573-578-8072. Rolla.

WANTED TO BUY ANTIQUE CARS: Convertible, Corvettes, unrestored, motors, parts considered. 870-324-1154. Ash Flat.

MILLER 10 FT OFFSET DISK: \$3,950. 573-765-4406. Richland.

RUBBER & LEATHER BOOTS AND HIP WADERS. Men's 11, Women's 7, some insulated. \$15-\$40 obo. 636-239-2695. Washington.

THE FIELD GUIDE TO WILD FLOWERS, 223 pages, based on Field Book of American Wild Flowers by F. Schuyler Mathews, \$6.50. 417-532-2045. (Leave message and phone number). Lebanon.

TRUE MODULARS: 30 to 60 day delivery available, 3 and 4 bedroom 573-657-7040 chateauhomes.net

I BUY.....used mobile homes. Call or text 573-338-6250 or email GregS.CH@outlook.com

CUSTOM SAW MILLING: 417-533-4607. 417-664-1195. Lebanon.



CENTRAL BOILER CLASSIC EDGE
TITANIUM HDX

Eliminate high heating bills with Central Boiler's NEW, certified Classic Edge Titanium HDX OUTDOOR WOOD FURNACE. Call today!

Outdoor Wood Furnace
CentralBoiler.com

The Classic Edge 360, 560 and 760 HDX are U.S. EPA Certified

Yarbrough Equipment Sales & Services, Inc.
9776 E. State Hwy OO • Strafford, MO
417-736-2303 • 1-866-286-6901 • www.yarbeq.com

Is Your Log Home **UGLY?**
Starting To Look

Professional Staining & Repair
(Log Homes & Wood Siding)

Call **Pine Ridge Rustic**
Log Home Building Supplies

573-729-7226

www.pineridgerustic.com



WANTED: Old Pinball Machines and Juke Boxes. 573-424-7200.

STORY & PICTURES BOOK OF OLD LINN CREEK: Haha Tonka and Camden County, by T. Victor Jeffries, 72 pages. \$5.00 postpaid. (417)532-2045. (Leave message and phone number). Lebanon.

JOHN DEERE 275 DISK MOWER: \$6,250. 573-765-4406. Richland.

STOCK MOBILE HOMES AVAILABLE: We gottem, single and double, 3 and 4 bedroom! Call Tuffy 573-657-2176. amegamobilehomes.com

AVAILABLE STOCK MOBILE HOMES: Immediately, double wide and single, 3 and 4 bedroom 573-499-9993 columbiadiscountohomes.com

TINY HOMES: We gottem 573-881-3283

FIREPLACE LOG GRATE: 28" in width. \$25 obo. 636-239-2695. Washington.

OUTDOOR FORCED AIR WOOD FURNACE: Fire proof, insulated, thermostatically controlled. Been made since 1986. Made by Harmons Heating & Cooling. 573-743-6943 or 573-247-5585. Salem.

WINCHESTER MODEL 94: 30-30, lever action. \$1,200. 417-533-9484. Niangua.

Larry Heisel Rentals

Have Rock?

How about 3,500 lbs. of Hammer

Call Larry!

573-779-1500

www.larryheiselequipment.com

Rental Available in 636 or 573 area code



WE BUY AND SELL
new and used mobile homes



(417) 501-1061

Fly Free with AFC.



AFC
ALTORID® FLY CONTROL PRODUCTS

KENT

Kropf Feeds

Located in the Heart of the Amish Mennonite Community!
417-345-8600
19 Prairie Lane, Buffalo



YOUR AD GOES HERE!

Add YELLOW Color For An Additional \$3 Per Reader Ad

All ads will include Phone Number (unless requested to be deleted by advertiser) and City Or Town, Phone Number with Area Code counts as one word. City or Town counts as one word.

RATE: 80¢ Per Word. All Classified Ads Require Payment Before Print.

(1) 80¢	(2) \$1.60	(3) \$2.40	(4) \$3.20
(5) \$4.00	(6) \$4.80	(7) \$5.60	(8) \$6.40
(9) \$7.20	(10) \$8.00	(11) \$8.80	(12) \$9.60
(13) \$10.40	(14) \$11.20	(15) \$12.00	(16) \$12.80
(17) \$13.60	(18) \$14.40	(19) \$15.20	(20) \$16.00
(21) \$16.80	(22) \$17.60	(23) \$18.40	(24) \$19.20
(25) \$20.00	(26) \$20.80	(27) \$21.60	(28) \$22.40
(29) \$23.20	(30) \$24.00	(31) \$24.80	(32) \$25.60
(33) \$26.40	(34) \$27.20	(35) \$28.00	(36) \$28.80
(37) \$29.60	(38) \$30.40	(39) \$31.20	(40) \$32.00

Place your Classified Ad TODAY!

417-532-9131 • 800-665-8875

Fax: 417-532-8140

Or Mail To: P.O. Box 192 • Lebanon, MO 65536

For your convenience we accept MasterCard, Visa, Discover or American Express



DEADLINE FOR CLASSIFIED ADS: FRIDAY 4:00PM!

Name _____

Address _____

City _____ Email _____

State _____ Zip Code _____ Phone _____

Ad Total \$ _____ X # Weeks _____ = Amount Enclosed \$ _____

REGISTERED HEREFORD & ANGUS BULLS: Home raised, Some Show-Me Select Qualified. 573-701-7828. Belgrade.

QUALITY USED SADDLES WANTED: Will pay cash! George's Tack, Saddles & Feed. 573-346-7866. Camdenton.

POOL TABLES: Installations, moves, recovers, repairs, accessories, etc. 573-646-1700.

LOOKING BACK WITH AN OLD TIMER BOOK: by Roy G. Mansfield as told to Eula York, of the Osage River Valley and the people who lived there before Bagnell Dam was built. Out of print book, \$20. Many old photos. 417-532-2045. (Leave message and phone number). Lebanon.

NEW SCHWINN STINGRAY BICYCLE: Monkey Handlebars. Banana seat. Rear Racing Slick. \$145.00. 573-364-7465. Rolla.

TRUCKERS & LOGGERS: Keep your Diesel engines running smooth this winter by adding Diesel plus. Extends the life of injectors and fuel pumps. For more info. Call 417-241-3653.

EARN \$60,000/YEAR PART-TIME: In the livestock or farm equipment appraisal business. Agricultural background required. Home study course available. 800-488-7570 or www.amagappraisers.com

Can You Dig It? We Can!

Specializing in Residential utility ditches for waterlines, electric lines, sewer line, etc.

T Campbell And Sons Excavating
417-559-9339 • Lebanon

THE MOST COMPLETE LINE-UP IN THE INDUSTRY
Cutting widths from 36" to 104"

HUSTLER

For Outstanding Products & Service
AGRI-ENTERPRISES

1-1/2 Miles South Of Licking, MO On Hwy 63
573-674-2203 • 1-800-653-7152
www.agri-enterprises.com

BIRDS OF MISSOURI FIELD GUIDE: By Stan Tekiela, 182 pages, \$5. 417-532-2045. (Leave message and phone number). Lebanon.

CERAMIC CANISTER SET: With cutting board that fits in kitchen counter top. Various species of ducks. Set \$40 obo. 636-239-2695. Washington.

350 FARMALL: Runs good, TA works. 417-349-2908. Cabool.

LIONEL TRAIN SET: Steam engine, tender, caboose and other car, track and transformer. \$195. 573-364-7465. Rolla.

A KID GROWING UP ON ROUTE 66 BOOK: By Bill Wheeler, Waynesville/Pulaski County area, many photos. \$6.50. 417-532-2045. (Leave message and phone number). Lebanon.

FIDDLE, BOW & CASE: Copy of a Stradivarius, \$200. 573-764-4435. Gerald.

WANTED: Transmission, automatic, 1957 Chevy car, cash paid. 573-636-8000. Jefferson City.

FAINTING GOAT BABIES ON BOARD: 1ST kids just arrived. All colors & patterns. 100% pure bred. Check website www.greenacresvillage.com or text 573-216-7796 for more info. Lake of the Ozarks.

NEW POWERFUL MINI CROSSBOW: \$100. 573-327-9068. Desloge.

PLAD PANTRY

DISCOUNT & SURPLUS FOODS
FRESH PRODUCE LLC
417-532-4700

Uncured Smoked Ham Slices.....\$7.99 3 lbs.
Coconut Meringue Pie.....\$4.49 46 oz.
Portable Protein Packs (P3's)\$4.25 8 - 3.2oz.
Sea Salt Caramel Ice Cream\$2.79 1.5 qt.
Strawberry or Chocolate Milk ...\$6.99 case of 12

1571 State Hwy 64 • Tunas, MO 65764
Hours: 8:30 a.m. to 5:30 p.m. • Closed Wed. & Sun.

Skyrocketing Prices & Long Wait Times
Getting You **DOWN?**

Quality in days, not months and the best prices around!

Let us measure your space for a Free Estimate!

- Luxury Vinyl Planks • Tile
- Cabinets • Granite Countertops
- And Much More!

NEIGHBORHOODS HOME IMPROVEMENT STORE

Where **QUALITY** doesn't cost more!
417-533-5080 • 19850 Houston Road • Lebanon
Mon.-Fri. 8am-5pm • Sat. 8am-3pm
neighborhoods-inc.com

No Supply Chain Issues!

Land

For Sale

Laclede Co., MO • 480 Acres +/-



\$999,000

- Quiet county road
- Stoutland School District
- Secluded yet convenient location
- Large timber parcel with nice bottoms and very gentle lay to it
- Only 20 miles to Lake of the Ozark
- Trail system throughout property
- Great hunting parcel with abundance of wildlife
- Multiple ponds
- Wet weather creek
- Large ridges
- Buck torn bottoms
- White oaks, red oaks, and hickory trees
- 1/2-mile deeded easement over an old county road



WHITETAIL PROPERTIES REAL ESTATE

HUNTING | RANCH | FARM | TIMBER

Brian Utecht | 417-766-5595

Brian.Utecht@whitetailproperties.com

WHITETAILPROPERTIES.COM

Missouri's Top Land Specialist in 2014,
2015, 2016, 2017, 2018, 2019 and 2020



LS TRACTOR DO MORE. HAUL MORE. FOR LESS.

LS TRACTOR

More Features, Standard! More Tractor for your Money!



MT225HE

Economy, 25hp, Hydrostatic, 4wd, Diesel Tractor w/QA Loader & Bucket

ONLY \$233*

/month for 84 months



MT355HE

Economy, 55hp, Hydrostatic, 4wd, Diesel Tractor w/QA Loader & Bucket & Dual Remotes

ONLY \$346*

/month for 84 months



MT468CPS

68hp, Cab, Power Shuttle, 4wd, Diesel Tractor w/QA Loader & Bucket

ONLY \$554*

/month for 84 months

*Financing Available at \$0 Down WAC, See Dealer for Details

TRAILERMAN

By Novae

"Setting the benchmark."

Gooseneck, Dump & Car Haulers In-Stock NOW! Trailerman "Built to Haul".



* Financing available.. See Dealer for Details.



WCT Farm & Lawn LLC

3299 E Evergreen Rd, Strafford, MO 65757
417-859-4311 • www.wctfarmandlawn.com